

Fig. B.1. Atlas of 102 galaxies with substantial $H\alpha$ structure, identified by their celestial coordinates. The OFF-band (*left panel*) and the NET frame (*right panel*) are given (2 objects per line). A 1 arcmin bar is given on all images.

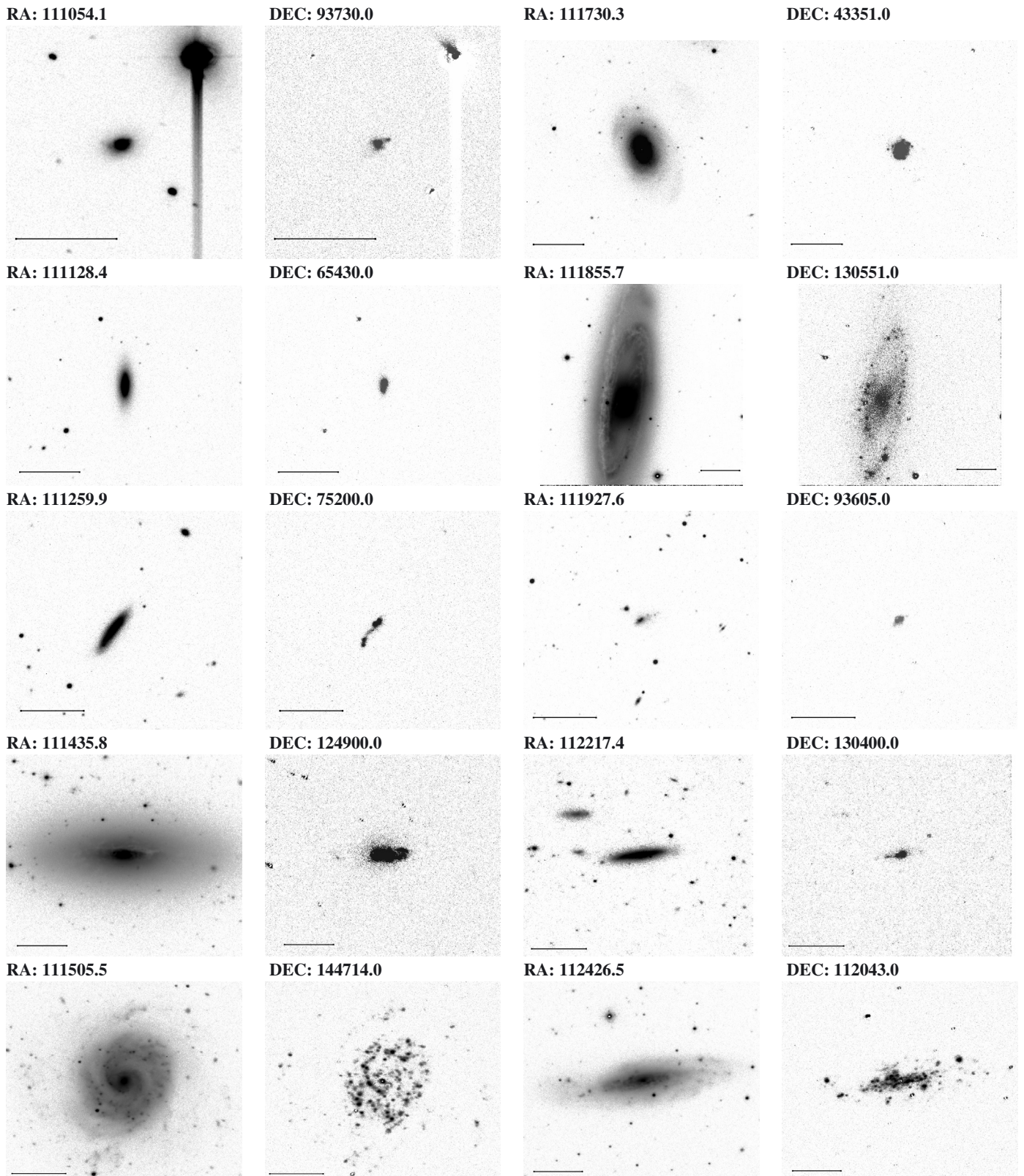


Fig. B.1. continued.

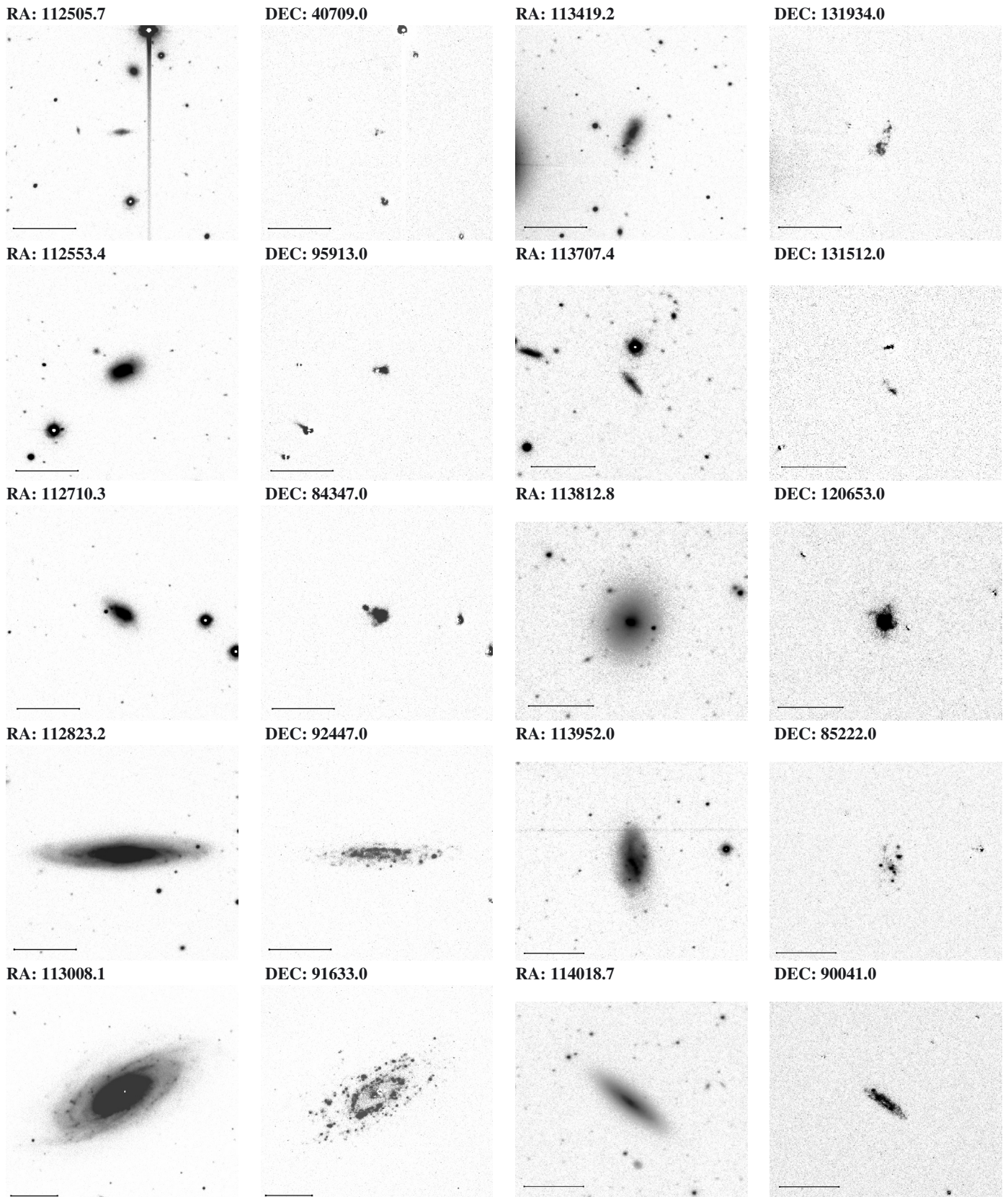


Fig. B.1. continued.

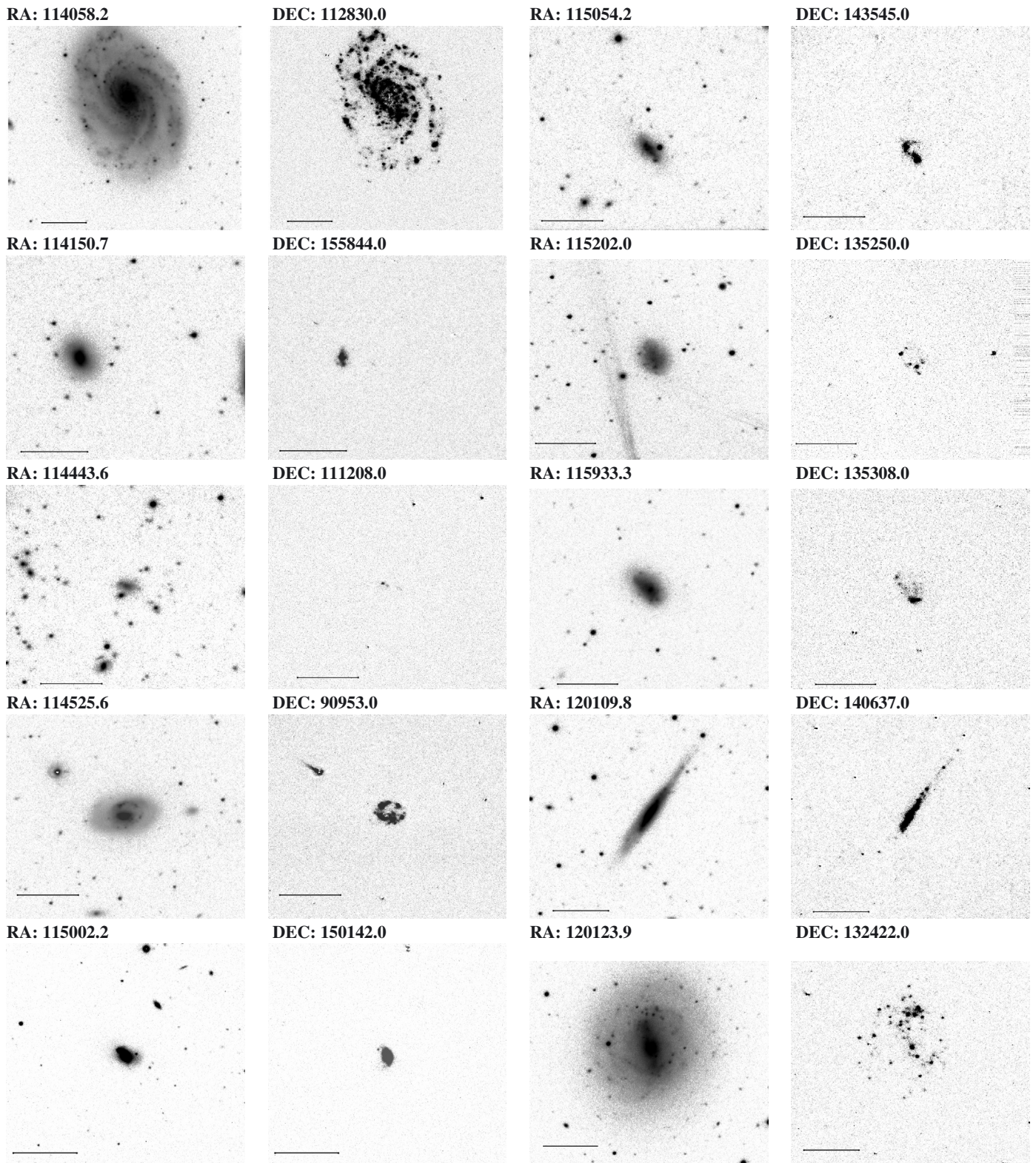


Fig. B.1. continued.

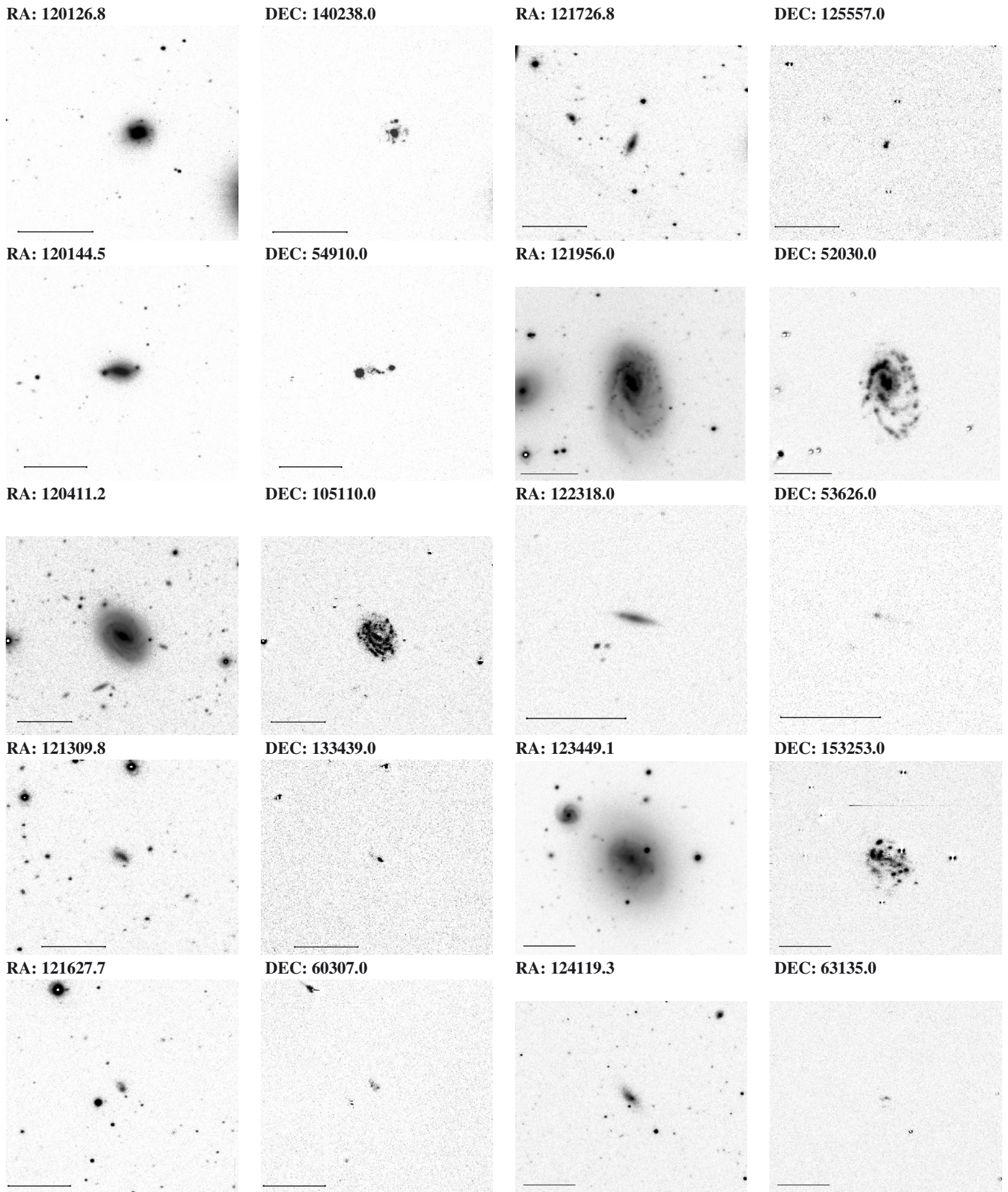


Fig. B.1. continued.

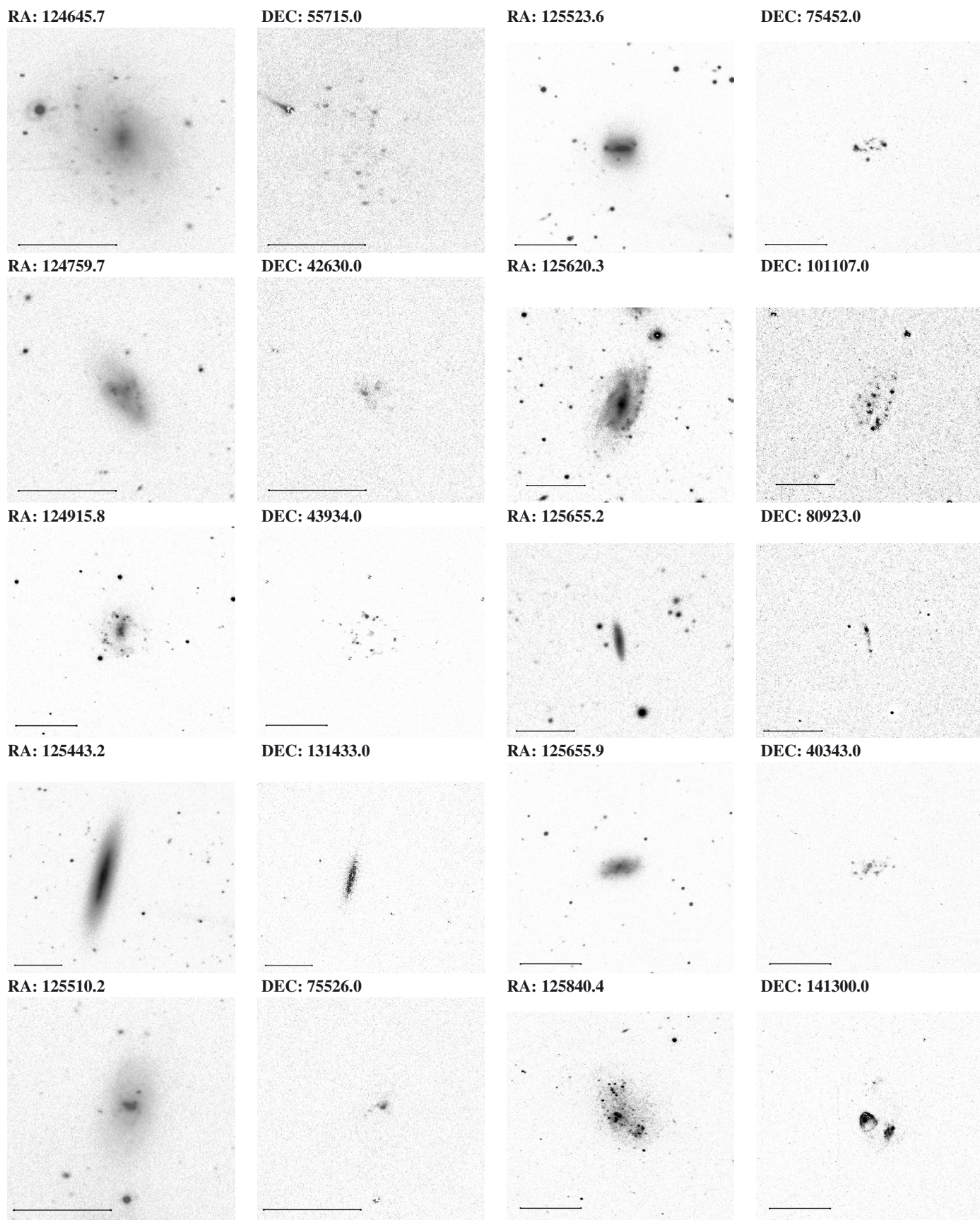


Fig. B.1. continued.

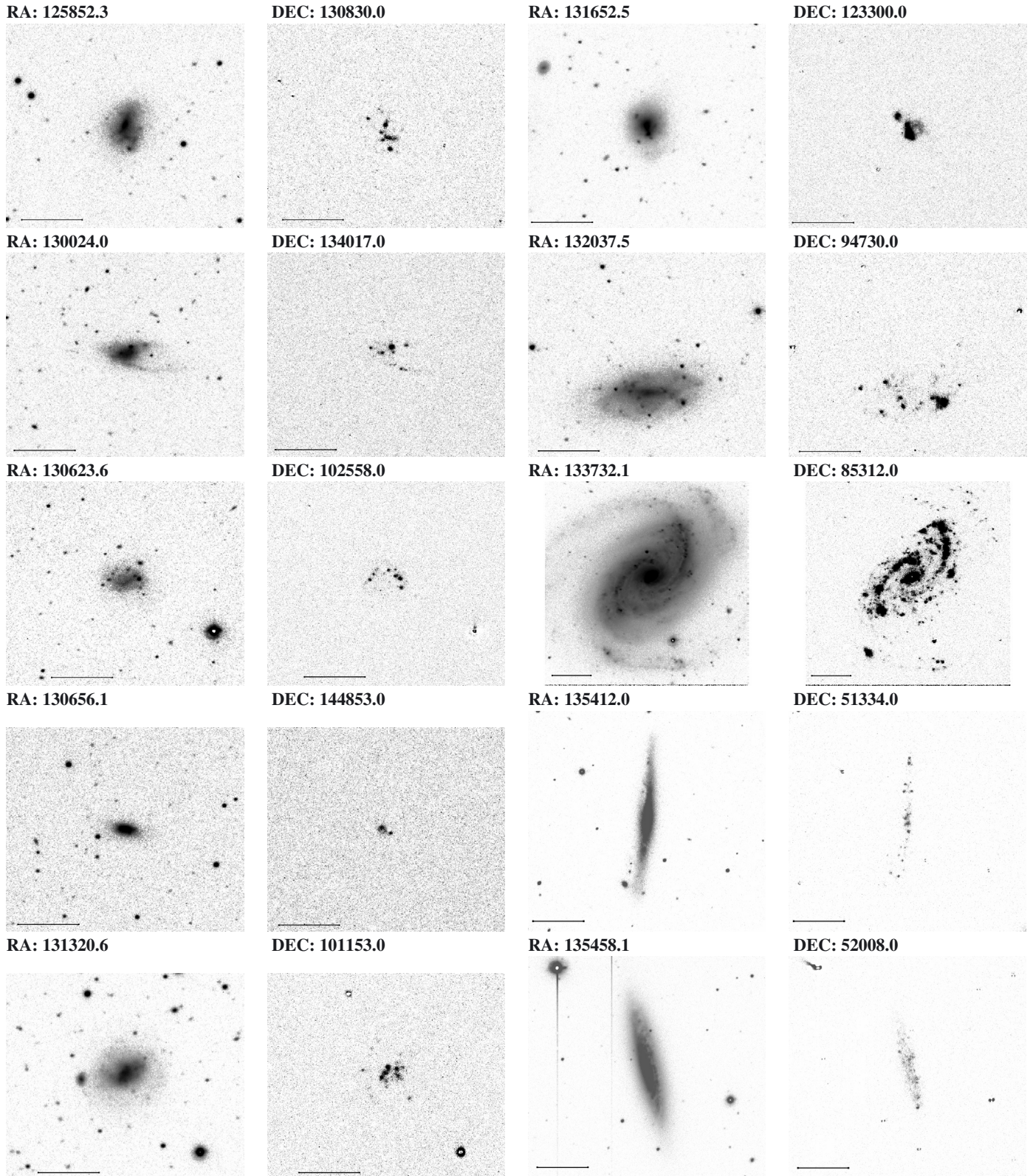


Fig. B.1. continued.

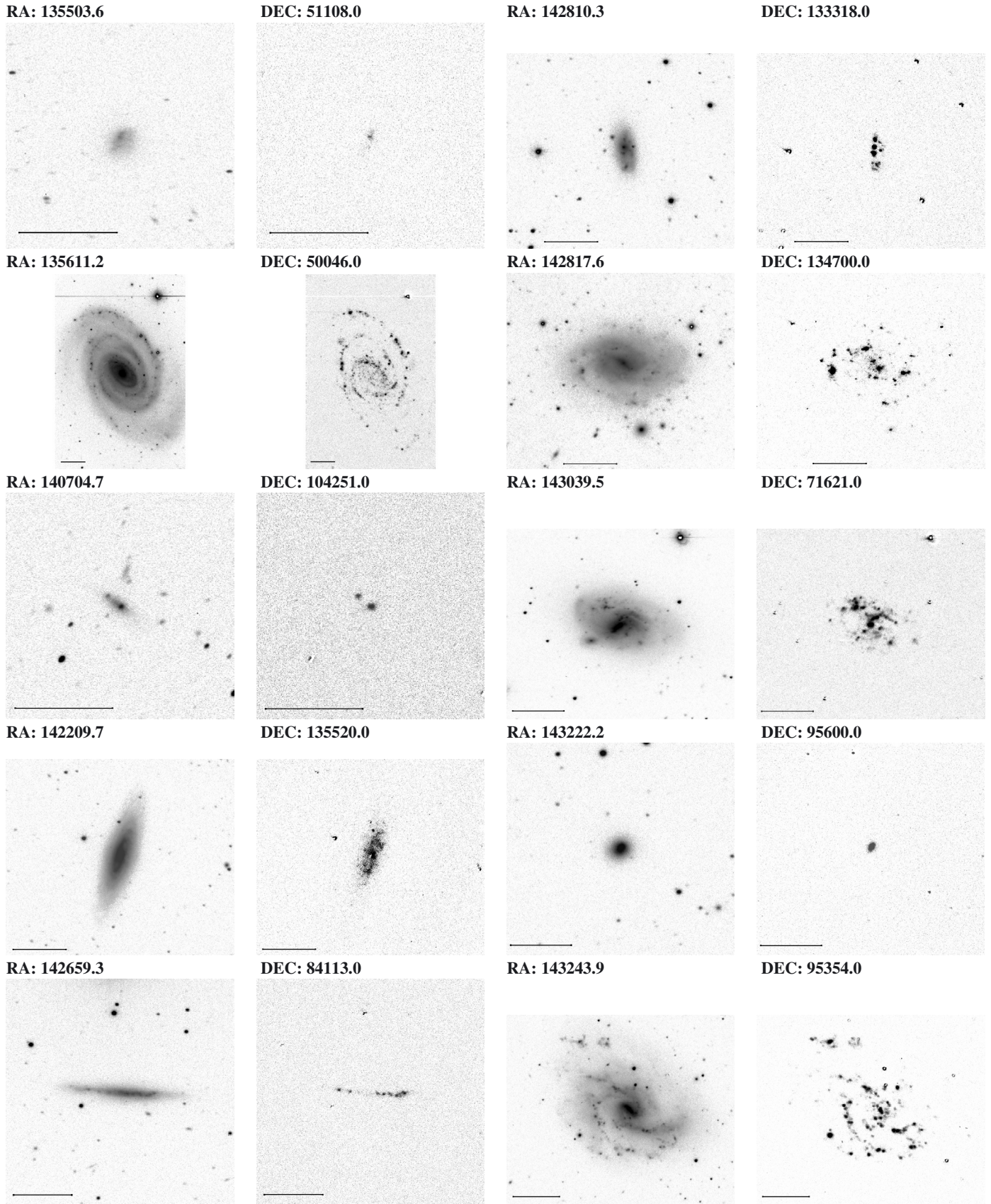


Fig. B.1. continued.

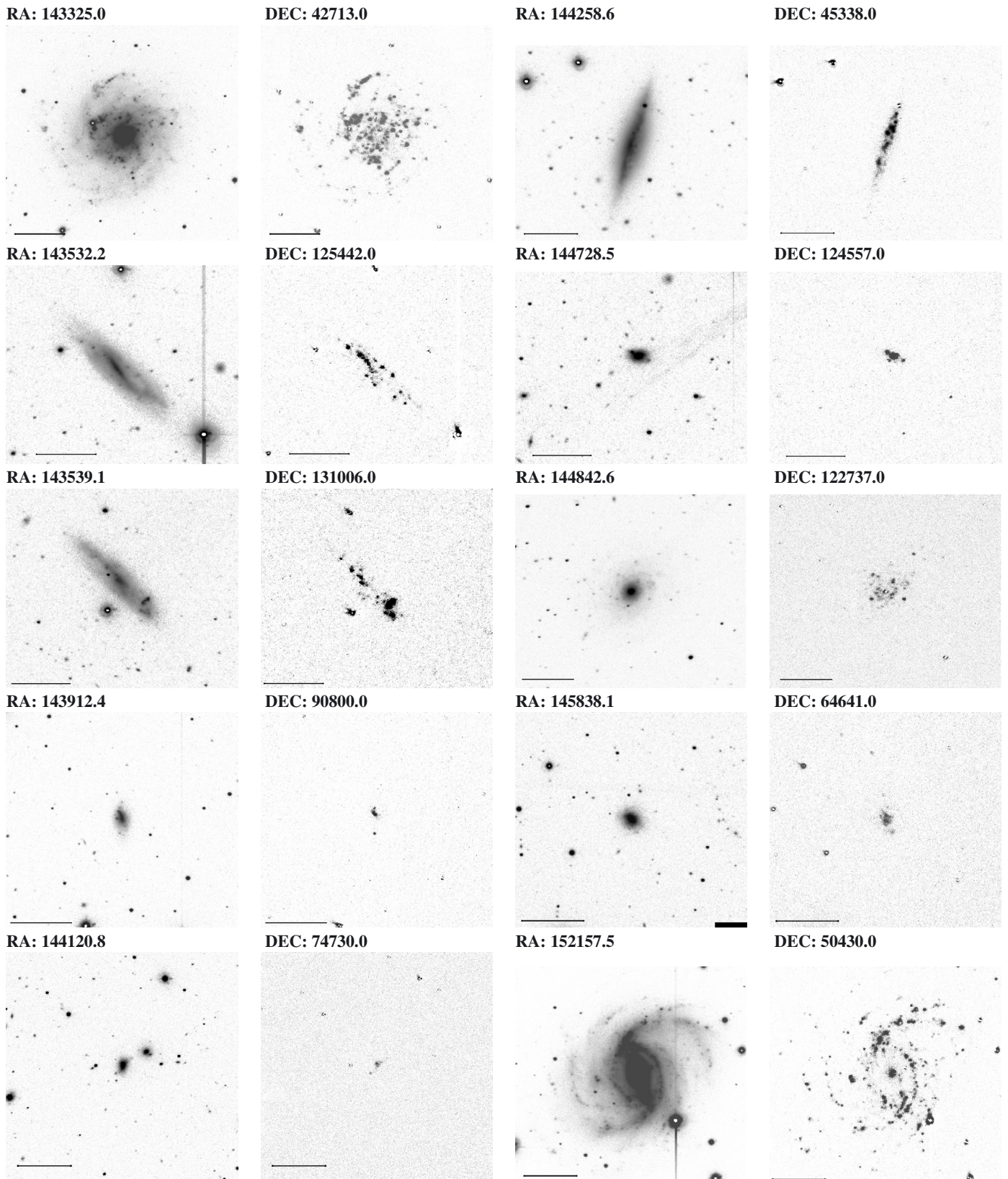


Fig. B.1. continued.

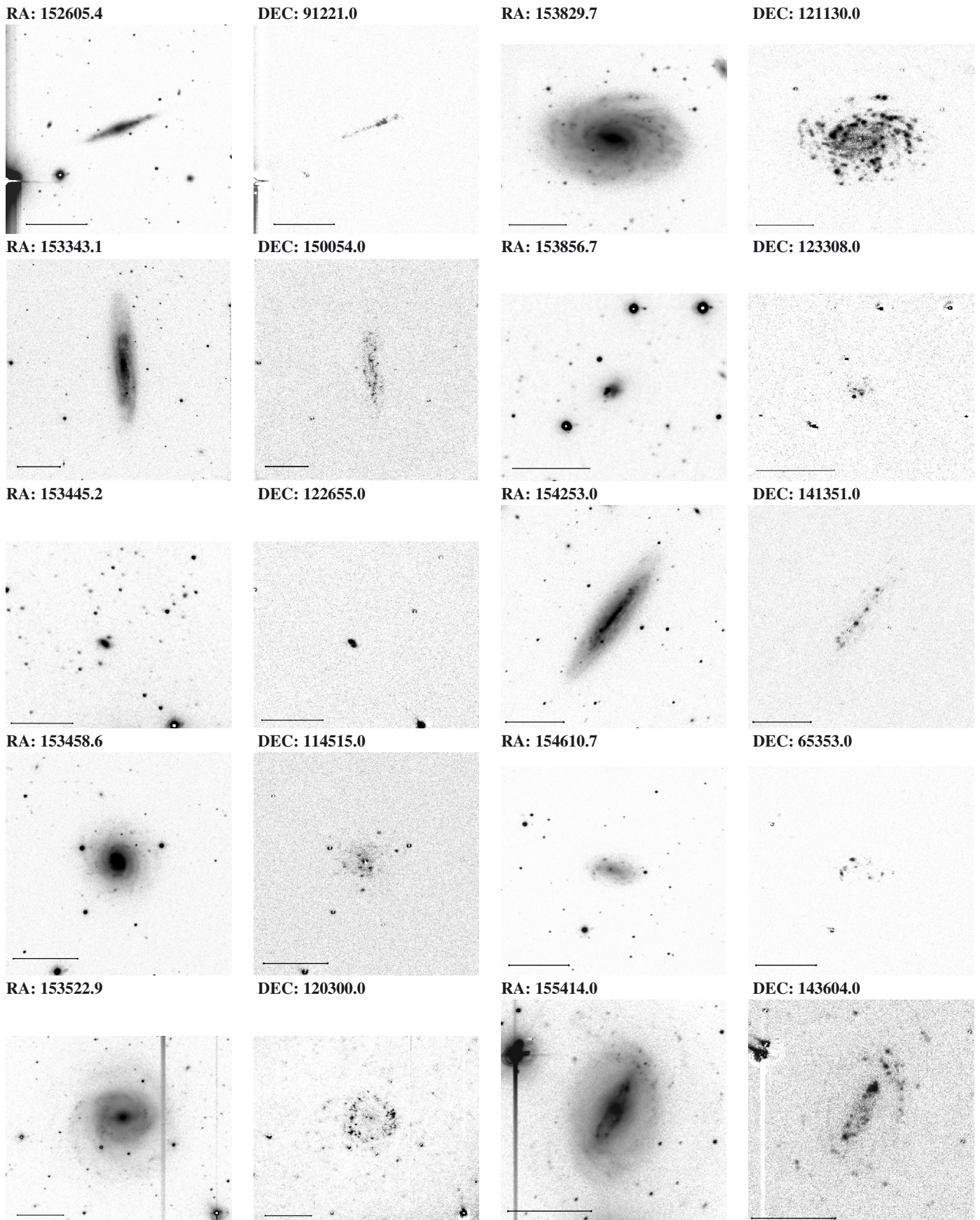
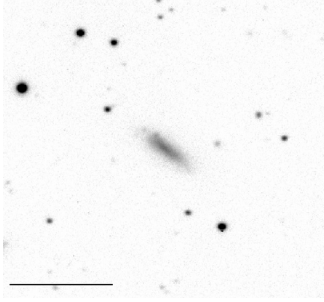
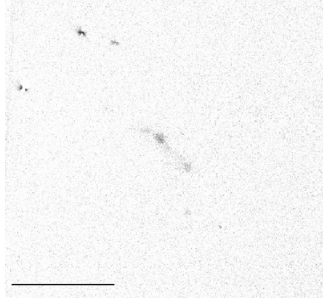


Fig. B.1. continued.

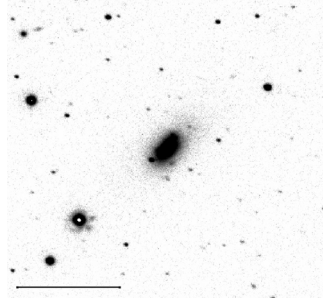
RA: 160602.2



DEC: 83024



RA: 160641.0



DEC: 63451.0

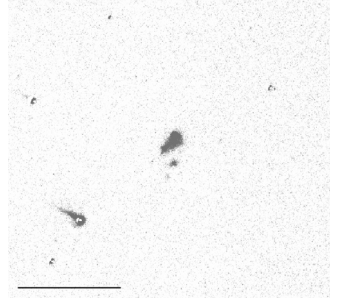


Fig. B.1. continued.