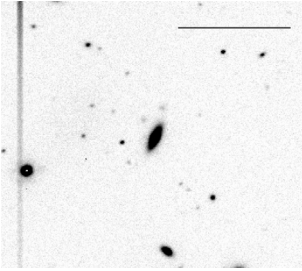
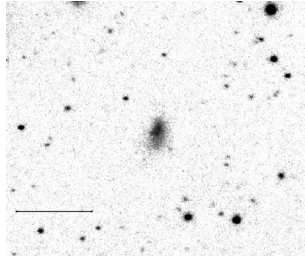


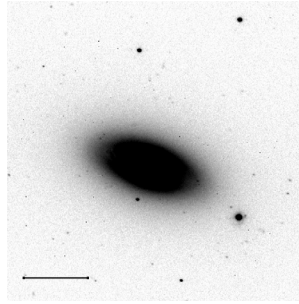
RA: 104010.7
DEC: 45432.0



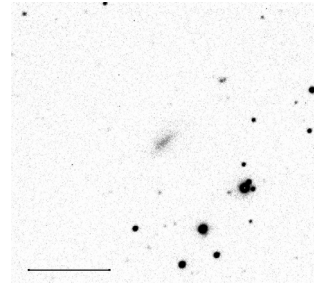
RA: 104457.3
DEC: 115501.0



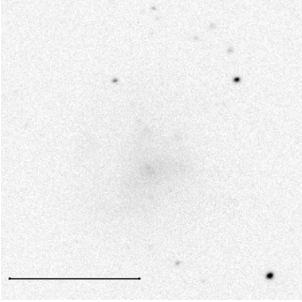
RA: 110018.6
DEC: 135404.0



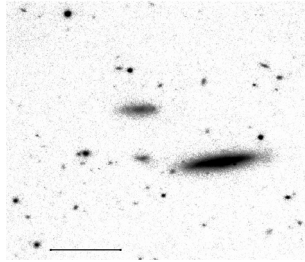
RA: 110301.8
DEC: 80253.0



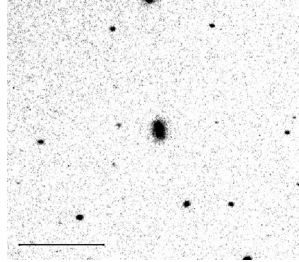
RA: 111251.7
RA: 101200.0



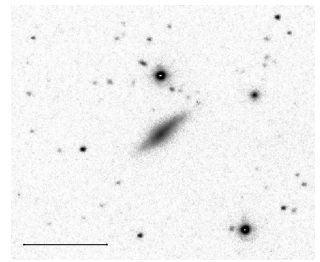
RA: 112222.4
DEC: 130500.0



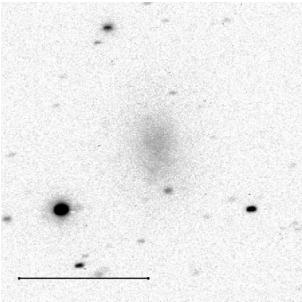
RA: 113349.0
DEC: 144919.0



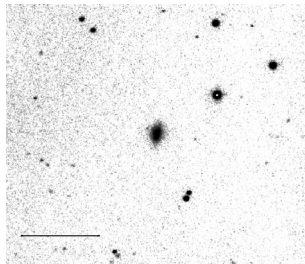
RA: 114056.5
DEC: 140426.0



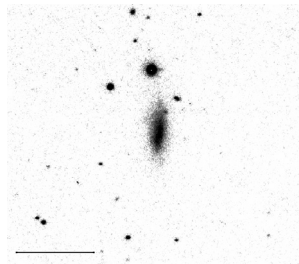
RA: 114310.1
DEC: 141330.0



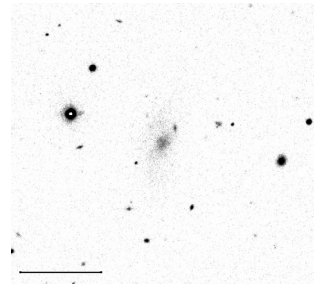
RA: 114326.6
DEC: 112412.0



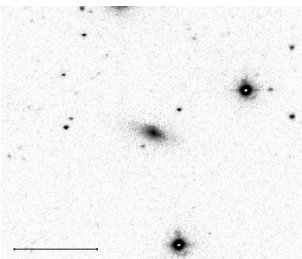
RA: 115746.9
DEC: 120222.0



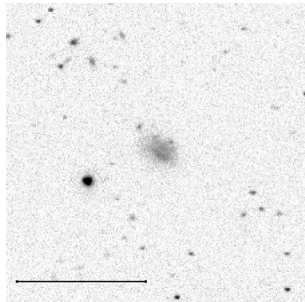
RA: 120122.2
DEC: 142707.0



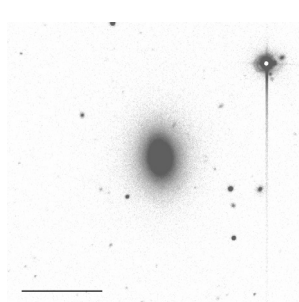
RA: 121002.0
DEC: 114250.0



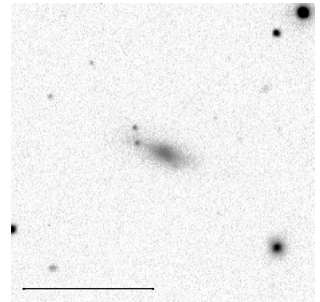
RA: 121041.7
DEC: 143906.0



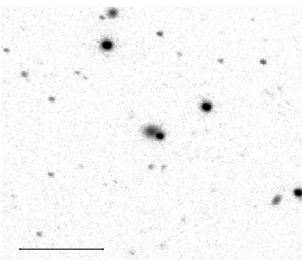
RA: 121351.1
DEC: 71156.0



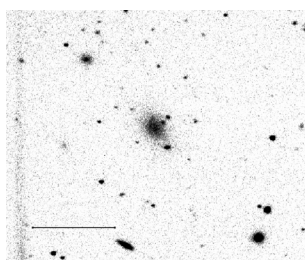
RA: 121426.9
DEC: 55508.0



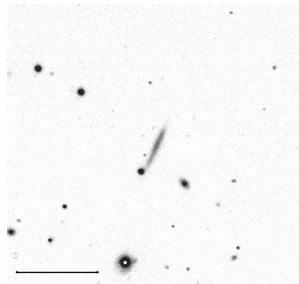
RA: 121528.1
DEC: 103123.0



RA: 121553.4
DEC: 140134.0



RA: 121727.4
DEC: 71946.0



RA: 121842.5
DEC: 122307.0

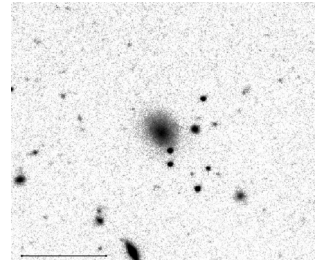
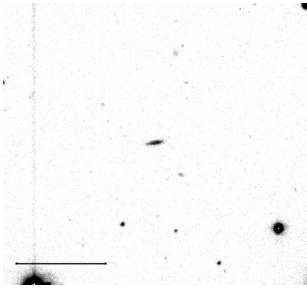
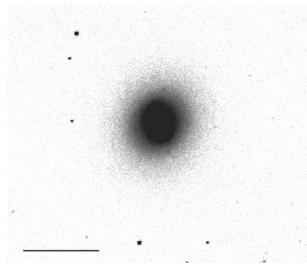


Fig. B.3. Atlas of 47 galaxies with no $H\alpha$ emission, identified by their celestial coordinates (4 objects per line). The OFF-band images are given with a 1 arcmin bar.

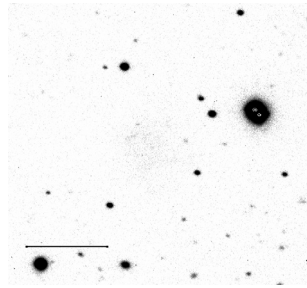
RA: 121918.8
DEC: 62410.0



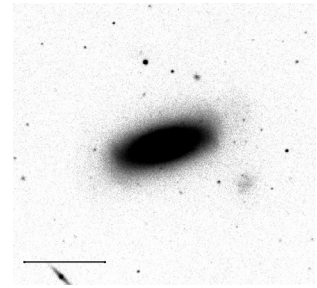
RA: 121929.2
DEC: 145223.0



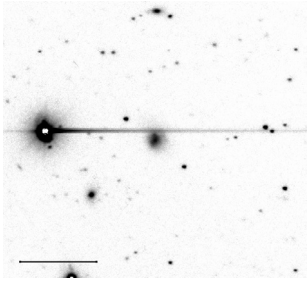
RA: 121952.8
DEC: 64000.0



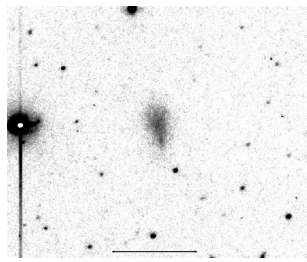
RA: 121953.5
DEC: 52843.0



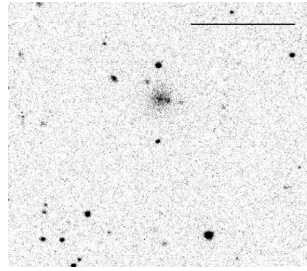
RA: 122059.9
DEC: 124340.0



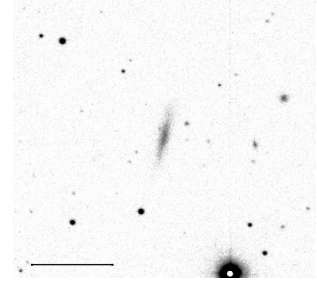
RA: 122305.5
DEC: 134434.0



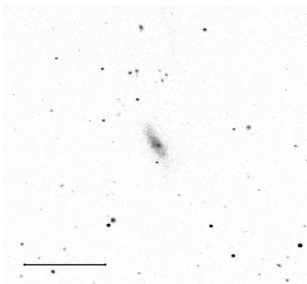
RA: 122603.0
DEC: 81003.0



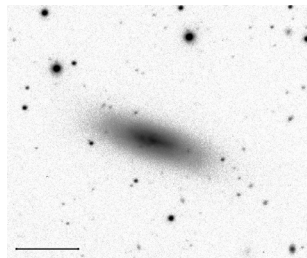
RA: 123514.3
DEC: 102600.0



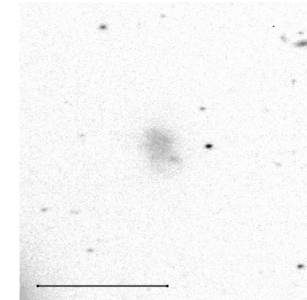
RA: 124420.8
DEC: 60534.0



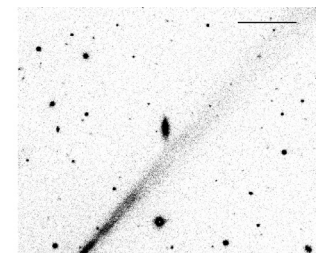
RA: 124445.2
DEC: 122200.0



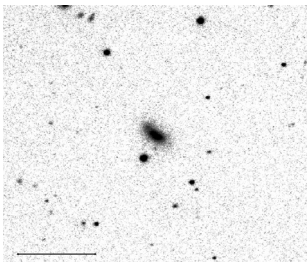
RA: 125106.6
DEC: 120347.0



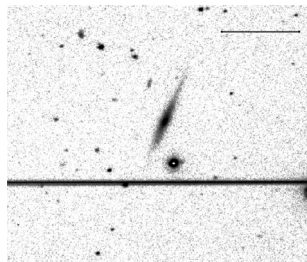
RA: 125401.5
DEC: 92700.0



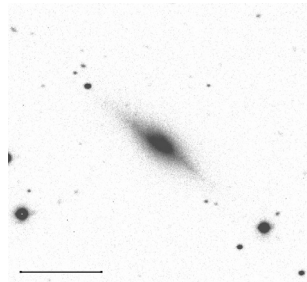
RA: 125941.3
DEC: 110440.0



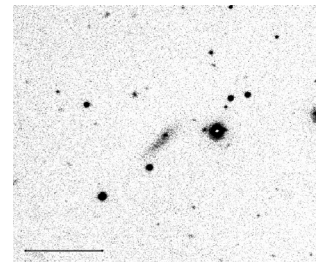
RA: 130352.7
DEC: 105807.0



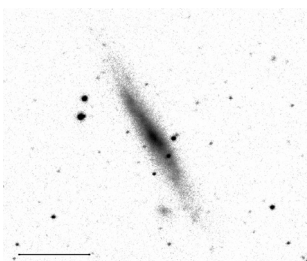
RA: 131233.6
DEC: 71100.0



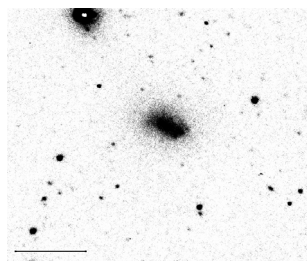
RA: 131951.0
DEC: 134844.0



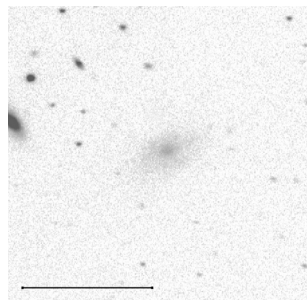
RA: 133545.3
DEC: 85807.0



RA: 133643.9
DEC: 83312.0



RA: 133850.8
DEC: 80645.0



RA: 135324.9
DEC: 51234.0

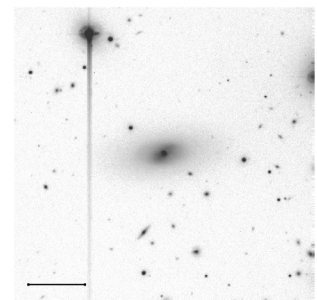
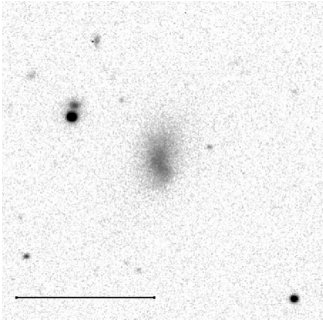
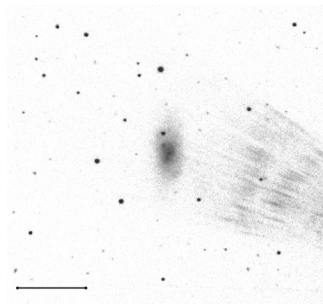


Fig. B.3. continued.

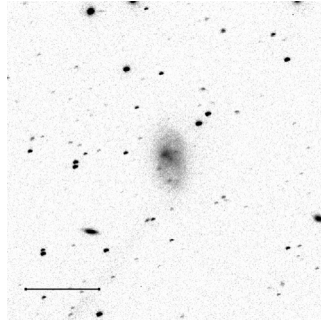
RA: 135609.6
DEC: 53250.0



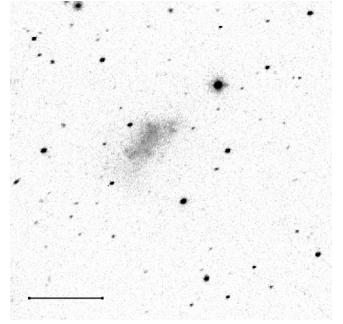
RA: 142424.3
DEC: 81639.0



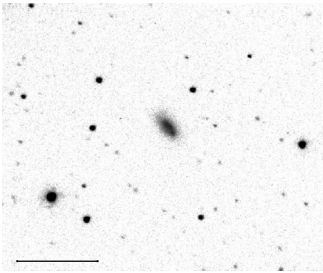
RA: 143639.3
DEC: 113430.0



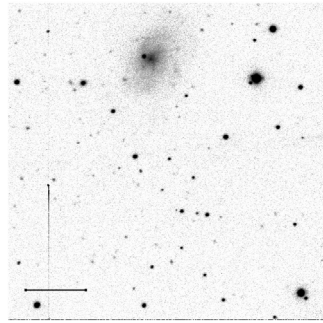
RA: 144624.1
DEC: 141300.0



RA: 152058.9
DEC: 121107.0



RA: 153821.0
DEC: 125753.0



RA: 155638.3
DEC: 61142.0

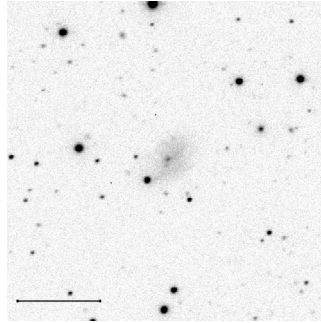


Fig. B.3. continued.