

**Fig. B.2.** Atlas of 84 marginal detections ( $<2\sigma$ ) or with complex unresolved  $H\alpha$  emission, identified by their celestial coordinates (2 objects per line). The OFF-band (*left panel*), the NET frame (*right panel*) are given. A 1 arcmin bar is given on all images

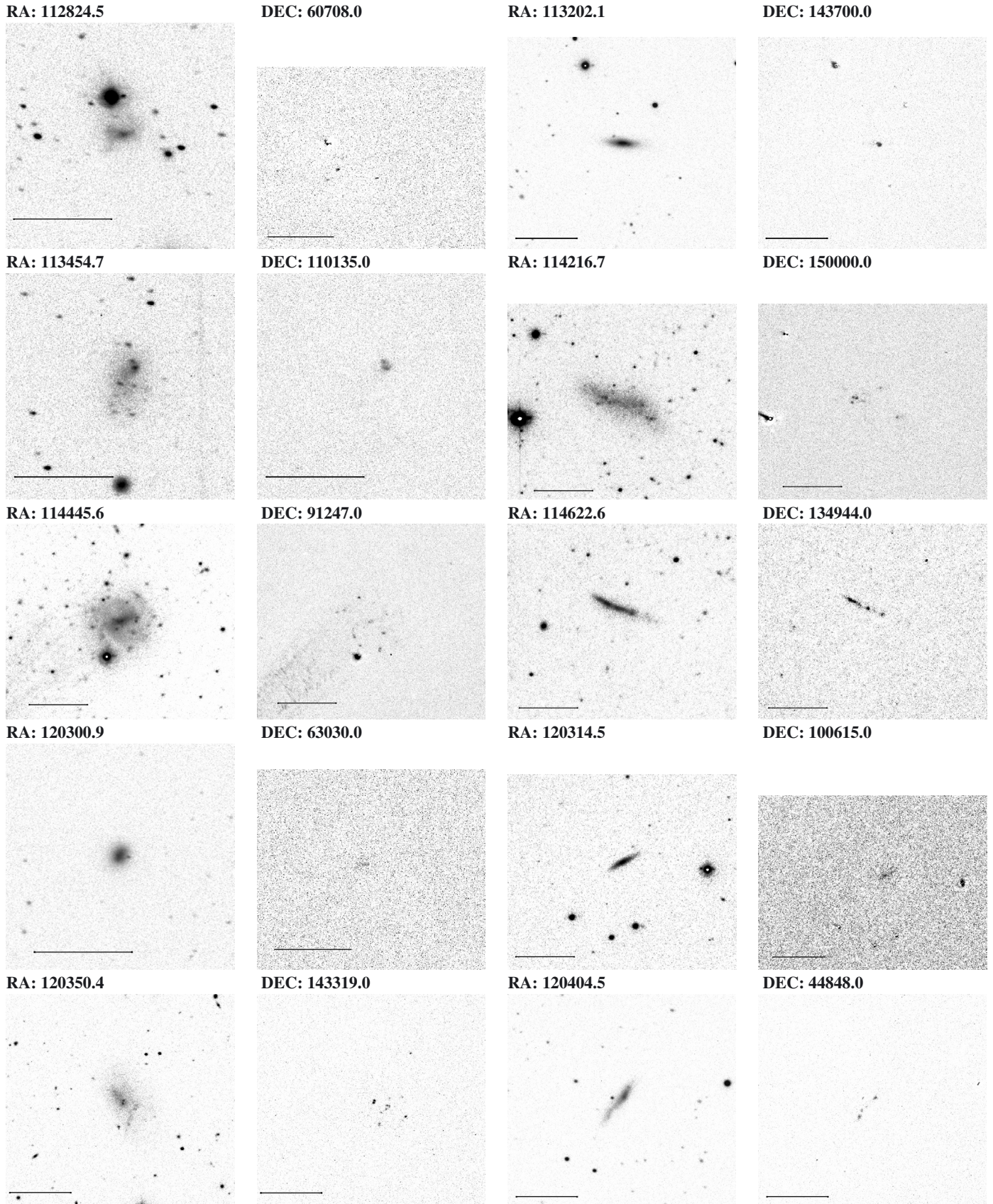
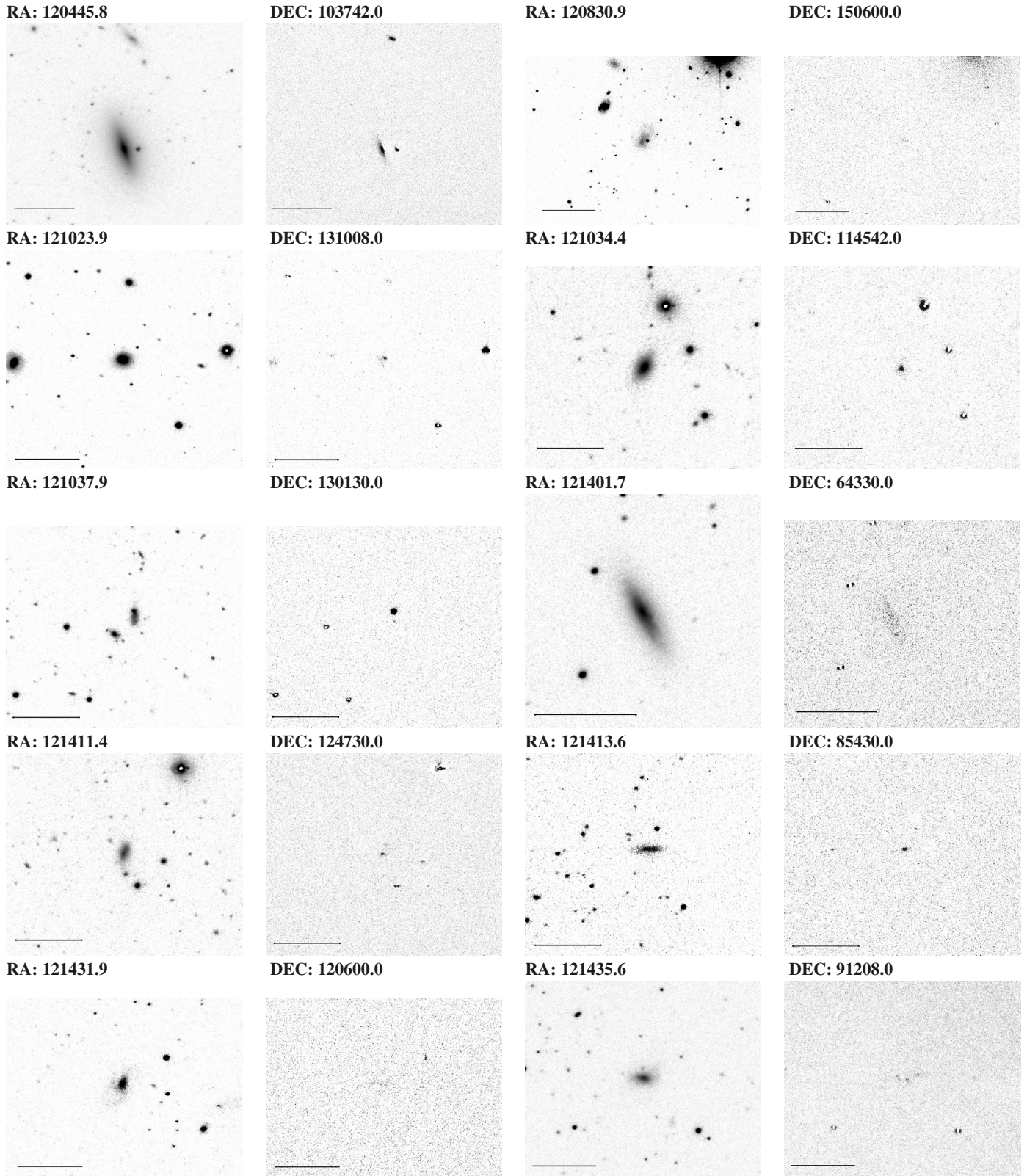
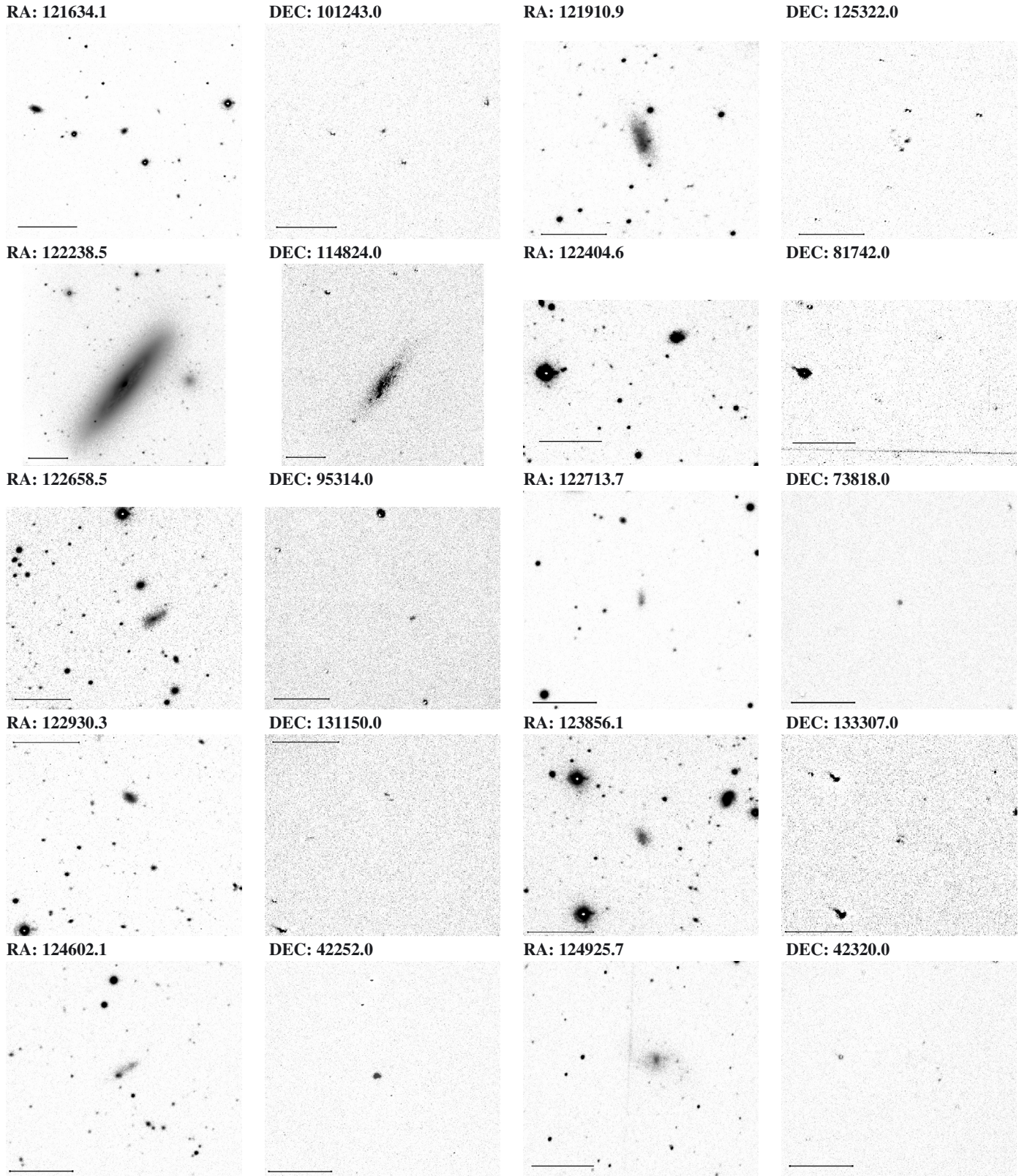


Fig. B.2. continued.



**Fig. B.2.** continued.



**Fig. B.2.** continued.

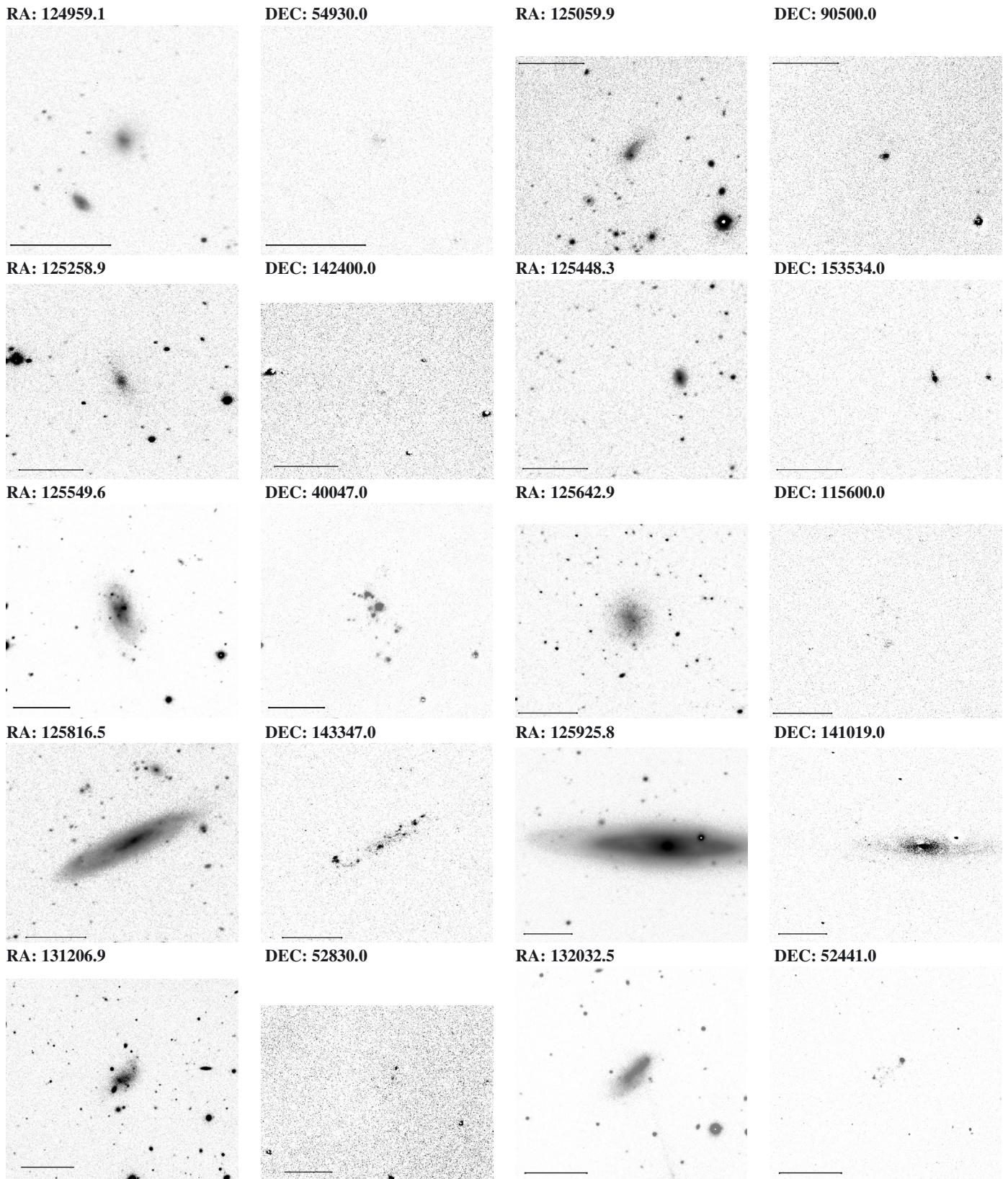


Fig. B.2. continued.

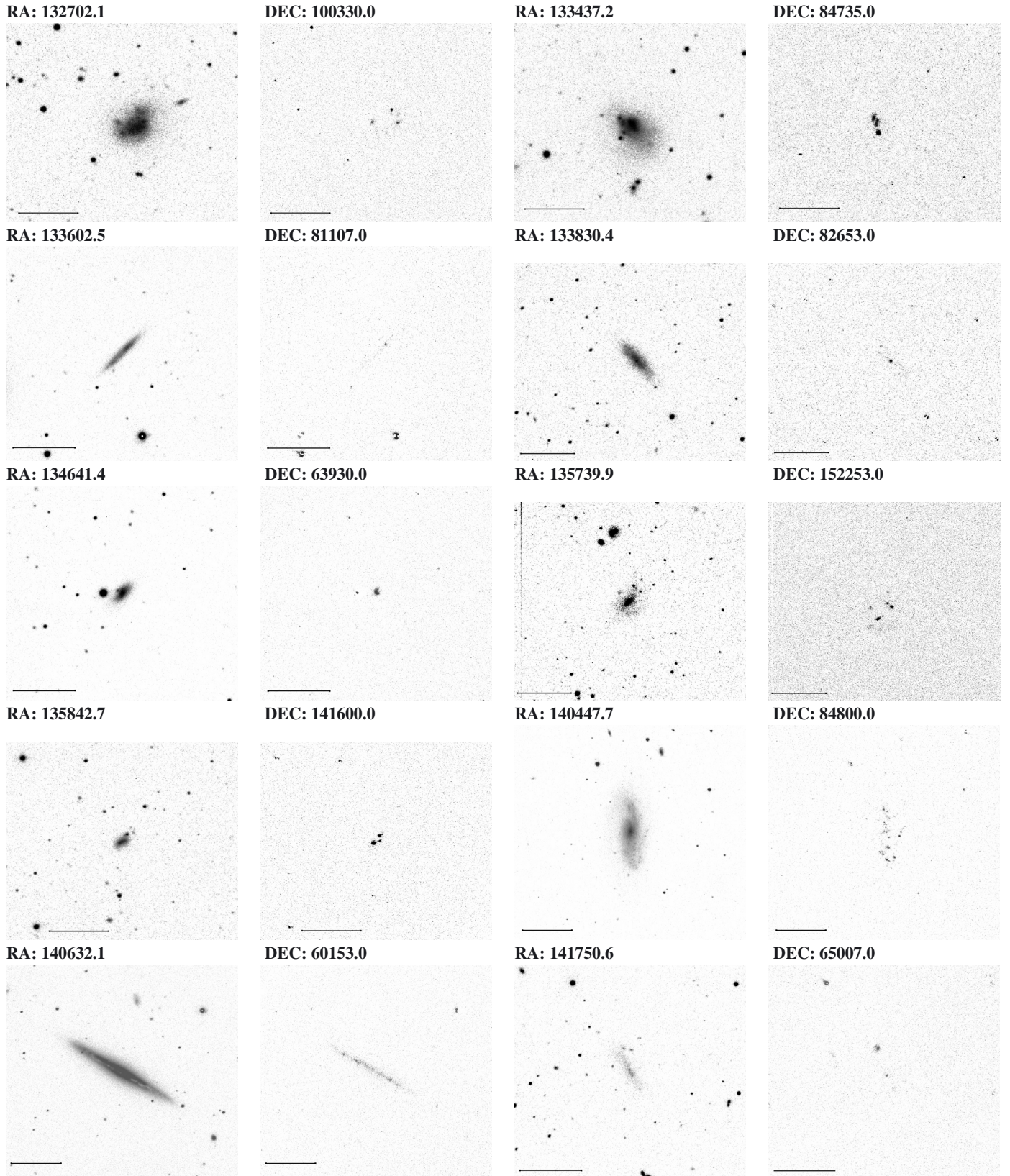


Fig. B.2. continued.

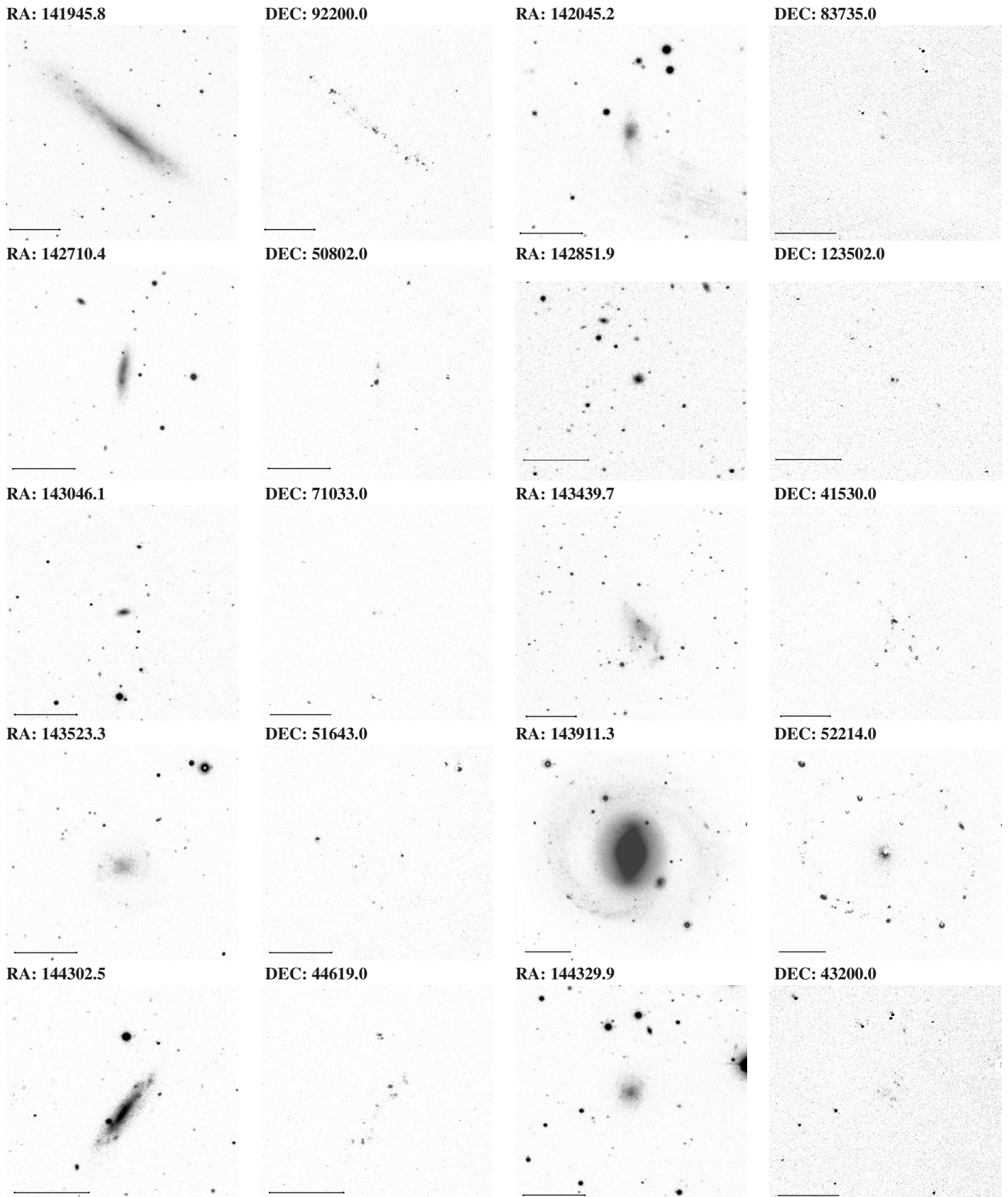


Fig. B.2. continued.

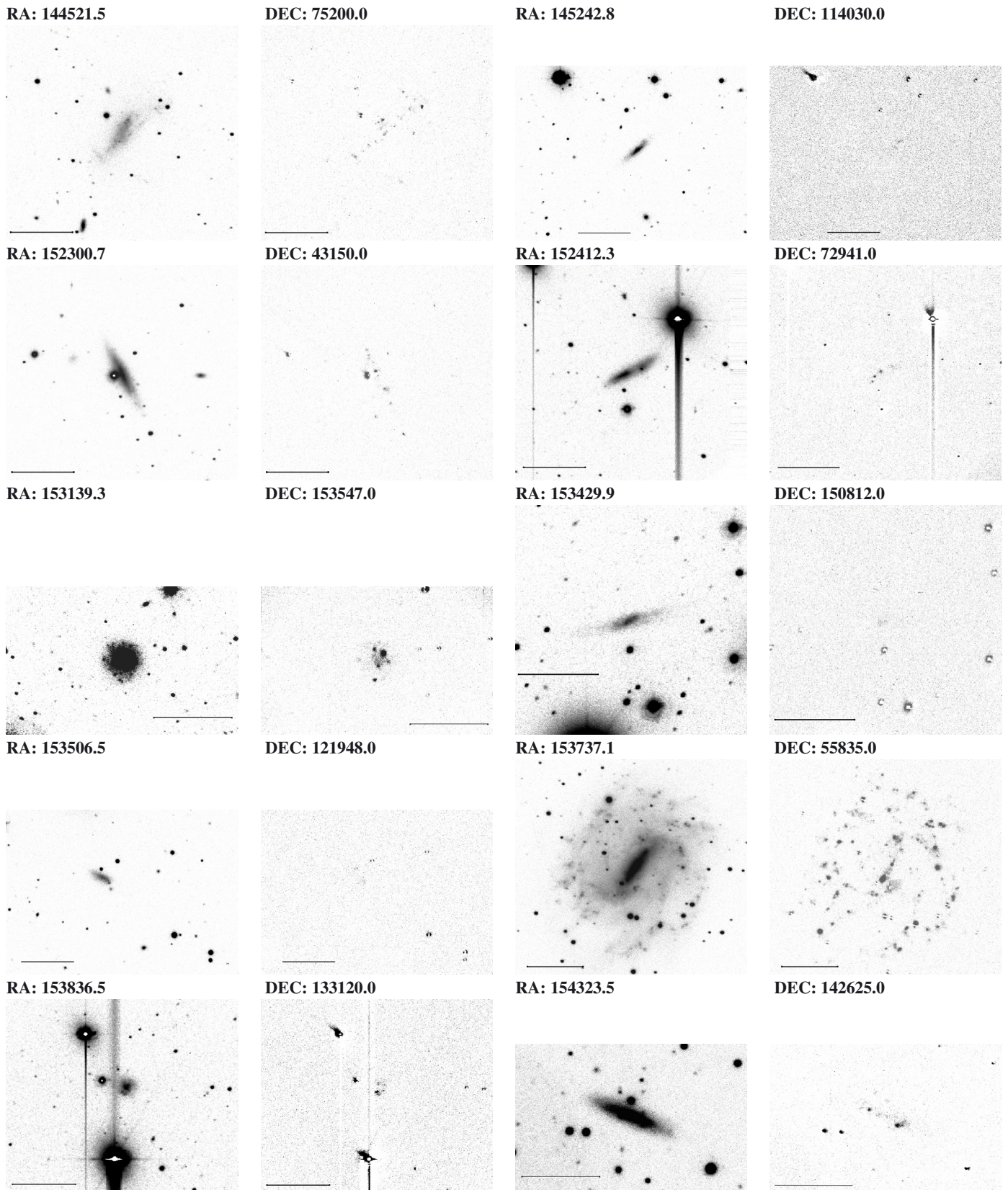
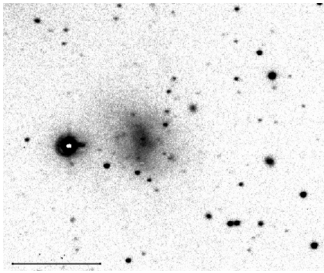
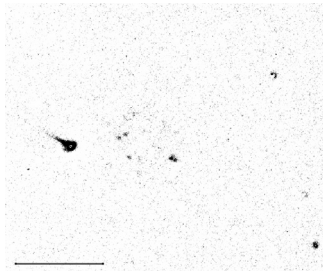


Fig. B.2. continued.

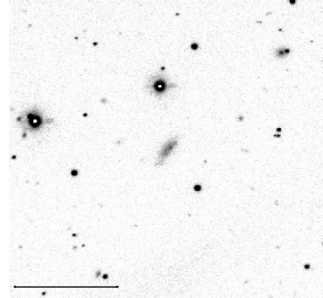
RA: 154543.1



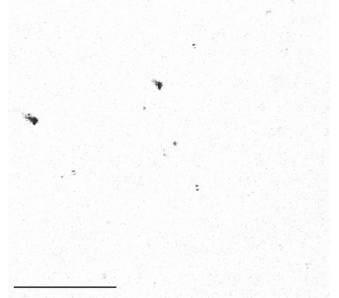
DEC: 123035.0



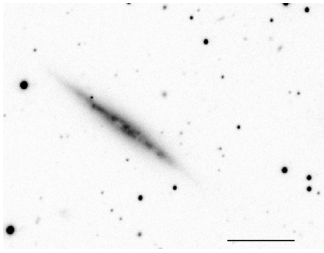
RA: 155954.9



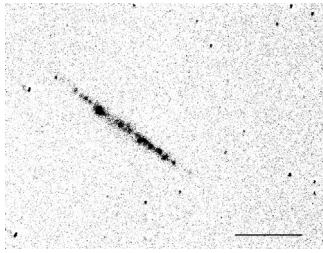
DEC: 65317.0



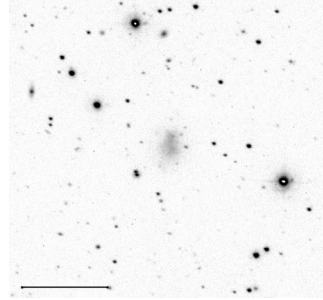
RA: 160817.0



DEC: 73216.0



RA: 161220.5



DEC: 63237.0

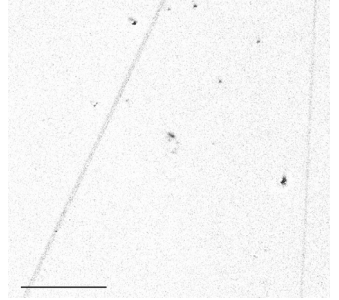


Fig. B.2. continued.