

The stellar mass to light ratio in the isolated spiral NGC 4414

O. Vallejo¹, J. Braine¹, and A. Baudry¹

Observatoire de Bordeaux, UMR 5804, CNRS/INSU, BP 89, 33270 Floirac, France

Received 20 December 2001 / Accepted 18 February 2002

Abstract. We present high resolution CO(1–0) interferometric observations and deep HST $B - V - I$ images of the flocculent isolated Sc type spiral NGC 4414. The goal is to determine the stellar mass-to-light (M/L) ratio in a galactic disk. NGC 4414 is an ideal object for this kind of study, as it is an unperturbed object at high galactic latitude with very extended atomic gas (HI). Many Cepheid light curves were measured in NGC 4414 so its distance is known to be about 19.2 Mpc. NGC 4414 is quite axisymmetric, with no bar and poorly defined spiral structure, and the center is seen unobscured (no CO, HI, H α , or thermal dust emission near the nucleus), as in many isolated spiral galaxies. Not only does this result in minimal non-circular velocities but also, and this is a key to our success, the central light profile traces the total mass. The stars are seen without a dust screen, the central gas mass is very low (undetected), and we show that the dark matter is negligible in the central regions. We have developed an axisymmetric analytical gravitational potential model to account for the central light (mass) profile, the dynamics of the molecular gas in the highly obscured molecular ring, and the stellar light profile outside the highly obscured region. A single dominant disk component reproduces the disk dynamics and outer stellar light profile such that even if other disk components were present they would not affect our results. The contribution of dark matter is constrained by the extremely extended HI rotation curve and is small, possibly negligible, at distances less than 5–7 kpc from the center. Furthermore, the M/L ratios we derive are low, about 1.5 in I band and 0.5 in K' band. The B and V band M/L ratios vary greatly due to absorption by dust, reaching 4 in the molecular ring and decreasing to about 1.6–1.8 at larger radii. This unequivocally shows that models, like most maximum disk models, assuming constant M/L ratios in an optical waveband, simply are not appropriate. We illustrate this by making mock maximum disk models with a constant V band M/L ratio. The key is having the central light distribution unobscured such that it can be used to trace the mass. The K' band M/L ratio is virtually constant over the disk, suggesting that the intrinsic (unobscured) stellar M/L ratio is roughly constant. A primitive attempt to determine the intrinsic M/L ratio yields values close to unity in the B , V , and I bands and slightly below 0.5 in K' .

Key words. galaxies: individual: NGC 4414 – galaxies: spiral – galaxies: evolution – galaxies: ISM – galaxies: kinematics and dynamics – cosmology: dark matter

1. Introduction

The presence and nature of Dark Matter (hereafter DM) is one of if not the major problem in modern Astrophysics. There is evidence for DM at the scale of individual galaxies, in clusters, and in the universe as a whole (see reviews by Ashman 1992; Sofue & Rubin 2001, and references therein), although a cosmological constant may replace DM at the largest scale. Recent results (Alcock et al. 1998; Renault et al. 1998) make it appear unlikely today that all dark matter could be baryonic, although a large fraction if not all of the DM currently “observed” in galaxies could be baryonic. Estimating the content and distribution of DM in spiral galaxies is actually very difficult. The first essential step to understand the role of DM

in galaxies is to successfully identify the mass contributions of the visible – stellar and gaseous – components. That is the subject of this work.

To do this properly, one must measure the rotation curve in a spiral with extended atomic hydrogen (HI). The rotation curve must be observed with high spatial resolution near the center to avoid beam-smearing effects. Because the visible matter dominates the mass in the central regions of spiral galaxies (even in Cold Dark Matter, hereafter CDM, simulations), the central part of the rotation curve can be used to estimate the mass-to-light (M/L) ratio of the stellar component. To minimize stellar confusion and galactic absorption, our galaxy of interest should be as far as possible from the galactic plane. The last requirement is that the galaxy be at a well known distance. An Sc type would be ideal because they are the most numerous and the mass and luminosity of the bulge

Send offprint requests to: O. Vallejo,
e-mail: vallejo@observ.u-bordeaux.fr

Table 1. Basic properties of NGC 4414.

		reference
RA ₂₀₀₀	12 ^h 26 ^m 27.15 ^s	a
Dec ₂₀₀₀	+31°13′24.0″	a
Inclination	55°	a
Position Angle	157°	a
Morphological Type	Sc	b
Optical Diameter D_{25}	4′	c
Distance	19.2 ± 2 Mpc	d
Systemic Velocity	716 km s ⁻¹	e

a: This paper, position of nucleus determined from HST observations of northern field. b: De Vaucouleurs et al. (1991). c: This paper. d: Turner et al. (1998), Thim (2000). e: Braine et al. (1993)

are low compared to the disk, making mass-modeling in principle simpler. The galaxy presented here, NGC 4414, satisfies all of these criteria. NGC 4414 is an isolated object and its dynamics are not perturbed by gravitational encounters with other visible galaxies.

One of the most important questions to resolve is the value of the stellar mass-to-light ratio (M/L) of the galactic disk. In order to model rotation curves of spiral galaxies, the stellar light distribution in a given band is often scaled by the highest M/L ratio possible without generating higher rotation velocities than are actually observed in the inner disk – the so-called maximum disk model. This underlines the need for spatial and spectral resolution. Carbon Monoxide (CO) is an ideal tracer of the rotation curve in the disk because the CO emission comes from the cool dense gas which is naturally closer to the galactic plane and dynamically cold. The lines are much narrower than the H α (or H β etc.) lines and do not suffer from extinction. The molecular gas, traced by the CO lines, has higher column densities than the HI and can be observed at higher angular resolution. We present high resolution observations of the CO lines obtained with the IRAM interferometer. Earlier interferometric CO observations of NGC 4414 were presented by Sakamoto (1996) and Thornley & Mundy (1997b). The large scale molecular emission has been discussed in Braine et al. (1993, 1997); Braine & Hughes (1999), in which the $N(\text{H}_2)/I_{\text{CO}}$ ratio and its variation with galactocentric radius have been estimated. The H α emission, tracing star formation and ionized gas, was measured by Pogge (1989).

Our goal is to strongly constrain the M/L ratio in the disk of NGC 4414 using a combined interferometric CO (inner part) and HI (outer part) rotation curve. NGC 4414 was part of the Hubble Space Telescope (HST) Cepheid key project (Turner et al. 1998) and thus very deep and detailed images are available in the B , V , and I bands. In addition the distance is known to within about 10%. We have chosen the I -band ($\sim 0.8 \mu\text{m}$) as our reference stellar brightness because the longer wavelength should better

Table 2. Dates and total observing times per filter for the northern and southern parts of NGC 4414.

	Optical Band	Obs. Date	Total Observing Time
North	$F439W$ (4311.85 Å)	Ap. 1996	5000 s
North	$F555W$ (5442.23 Å)	Ap. 1996	32 430 s
North	$F814W$ (8001.59 Å)	Ap. 1996	10 230 s
South	$F439W$ (4311.85 Å)	Ap. 1999	2080 s
South	$F555W$ (5442.23 Å)	Ap. 1999	1600 s
South	$F814W$ (8001.59 Å)	Ap. 1999	1600 s

trace the stellar mass and is less affected by extinction than the B or V bands.

An absolute distance D is a necessary parameter to estimate the M/L ratio. The luminosity is determined as $L = S \times 4\pi \times D^2$, where S represents a flux, whereas the mass M is proportional to the galactocentric distance: $M \propto R \times V^2 \propto \theta D \times V^2$ where θ is the angular distance to the point whose rotation velocity is V . Thus, $\frac{M}{L} \propto D^{-1}$ so D must be known.

In Sect. 2 we present the new observational data – the HST $B - V - I$ data and the CO(1–0) Plateau de Bure observations. In Sect. 3 we describe our gravitational potential model, based on the interferometric CO observations and the HST light profiles, to calculate (Sect. 4) the M/L ratio in the B , V , and I bands after subtraction of the gaseous mass. Our results are compared to the rather rare literature estimates of stellar M/L values and to the so-called “maximum disk” method.

In a companion paper we discuss the dark matter distribution in NGC 4414 based on our knowledge of the underlying visible mass and on various spherical and disk DM distributions, particularly those proposed by Navarro et al. (1996) and Moore et al. (1998, 1999) derived from simulations of galaxy formation in a CDM (or Λ CDM) universe. Whether Modified Newtonian Dynamics (MOND, Milgrom 1983) can explain the rotation curve of NGC 4414 without DM is also addressed in the companion paper.

2. Observations and data reduction

2.1. HST BVI observations

2.1.1. Data reduction

The optical observations presented in this paper have been retrieved from the HST public archive (see Table 2 and Turner et al. 1998).

We used WFPC2 automatic calibrated data corrected for ADC errors, bias and superbias levels, superdarks, obturation and pixel surface. The classical reduction procedure was applied using the IRAF software. We first corrected all the images for hot pixels, then cosmic rays were eliminated by combining consecutive exposures of a same field.

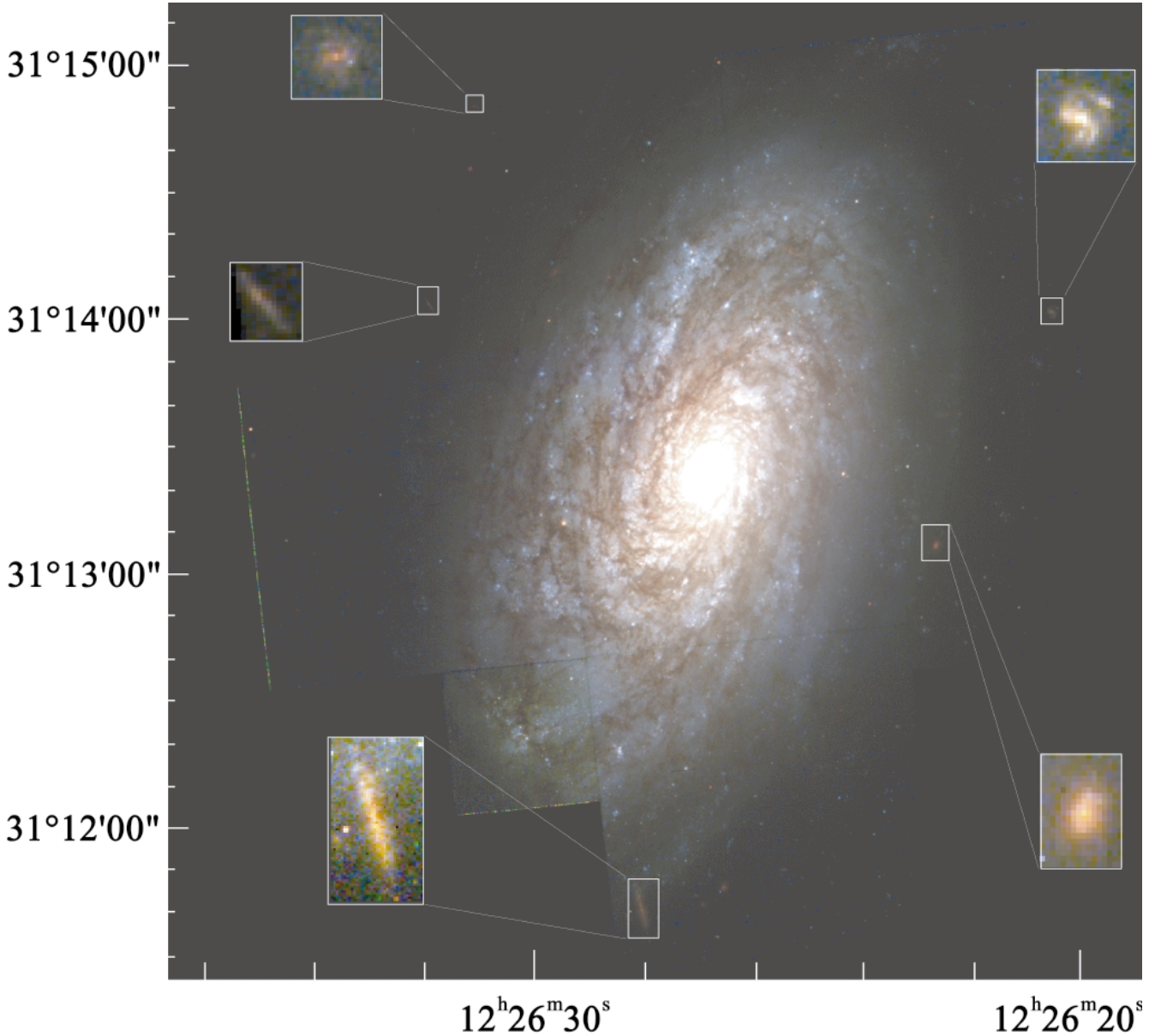


Fig. 1. True color image of the flocculent spiral galaxy NGC 4414 derived from HST *B*, *V*, and *I* band images. Coordinates are J2000. The dynamic range in the image is slightly over 10^4 , making the faint emission covering the entire field difficult to see. Some of the individual background galaxies seen through the disk of NGC 4414 are highlighted. They are generally quite red due to the interstellar medium in NGC 4414.

After this corrective stage, a mosaic of the 4 fields could be retrieved, or we could treat each field separately. Our goal was to obtain a complete mosaic of the galaxy, with the North (1996 HST Key Project) and South (1999 Hubble Heritage Project) part processed independently.

The next step was to estimate the shift between each image before adding them. The procedure is quite simple, only requiring selection of a few stars in each band. Because we calculate the shift and the rotation simultaneously, the stars must be sufficiently bright and homogeneously spread over the whole image. This calculation was made using the GEOMAP procedure which models a polynomial transfer function between the reference image and

each of the other images. All images in each band were then combined and rotated to obtain the *B* – *V* – *I* mosaics (see Fig. 1).

2.1.2. Luminosity in the outer part of the galaxy

A bias problem appeared in the HST photometry data as the surface brightness observed far away from the center of the galaxy was abnormally strong. Such a luminosity could not have a physical meaning as it was more than an order of magnitude higher than expected. Because of the size of the galaxy it was not possible to calculate the sky background directly from the HST images.

Table 3. Surface brightness corrections. Zero points are given in the Johnson-Morgan photometric system, the value corresponds to average of the corrections from all the spectral types, even if the difference between F2 and M0 are small.

	True brightness mag sec ⁻²	Biased brightness mag sec ⁻²	Zero point Johnson
<i>B</i> – <i>F</i> 439 <i>W</i>	24.15	22.88	+0.55
<i>V</i> – <i>F</i> 555 <i>W</i>	23.59	22.27	+0.00
<i>I</i> – <i>F</i> 814 <i>W</i>	22.58	21.28	–1.30

Optical observations of numerous spiral galaxies, including NGC 4414, were made by Héraudeau & Simien (1996) in order to determine reliable luminosity profiles. Conveniently, they deduced luminosity profiles in the *B*, *V* and *I* bands. We chose to calculate the surface brightness μ (in mag s⁻²) 100 arcsec from the center on the major axis of the galaxy. We subtracted a constant value to set the brightness in each band of the HST data at 100'' to the surface brightness given by Héraudeau & Simien (1996). The uncertainties for their photometry are quite low and the HST brightness profile after subtraction shows no odd bumps nor negative values. At higher brightness this problem becomes irrelevant and the agreement between the Héraudeau & Simien (1996) and the uncorrected HST data is good.

The conversion of instrumental magnitude to physical magnitude in the *V* band is immediate because it corresponds to the Johnson-Morgan photometric system (Holtzman et al. 1995). In the other bands we have to take into account the galaxy colors, presented as the colors of specific stellar populations. To identify the most representative spectral type of stars in the galaxy we compared the *B* – *V* and *U* – *B* colors of NGC 4414, *B* – *V* \approx 0.8 and *U* – *B* \approx 0.1, to the colors of the stellar populations given in Table 3–3 of Mihalas & Binney (1981). Around these values, the corrections remain small for stars of spectral types between roughly F2 and M0; it is only for the spectral types O5 and M6 that the corrections can reach 0.1 or 0.2 mag. For G0 and K0 the corrections remain nearly constant and we adopt these values (Table 3).

2.1.3. Solar luminosity

To determine the solar luminosity in each WFPC2 optical band we integrated a synthetic solar spectrum (Hauschildt et al. 1999) over the bandpass of each HST filter. The results are given in Table 4. We can now express the surface brightness for each band from the flux per unit wavelength or per unit frequency.

2.2. IRAM Plateau de Bure interferometer CO(1–0) observations

We observed the $J = 1 \rightarrow 0$ emission line of the ¹²CO in NGC 4414 using the IRAM Plateau de Bure interferometer between May 1996 and April 1997. The five

Table 4. Solar luminosity in each HST band.

Filter	Pivot Wavelength	Bandwidth	Solar Luminosity
F	λ_c	$\Delta\lambda$	L_\odot (erg s ⁻¹)
439 <i>W</i>	4311.85 Å	404.60 Å	1.97592×10^{32}
555 <i>W</i>	5442.23 Å	1044.65 Å	5.66221×10^{32}
814 <i>W</i>	8001.59 Å	1297.07 Å	4.27211×10^{32}

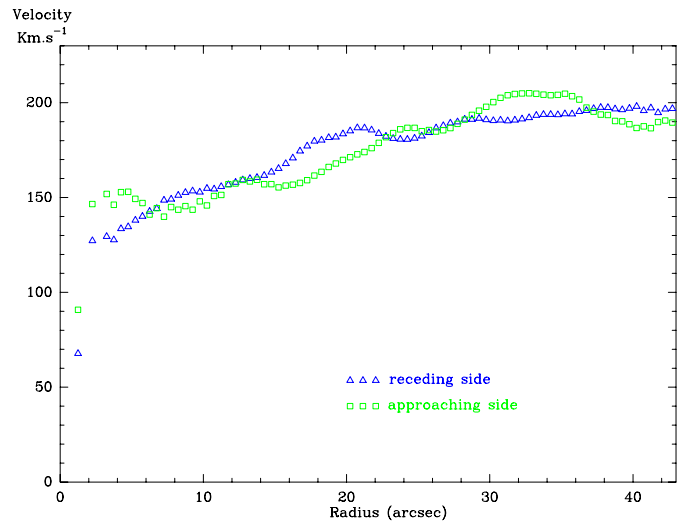


Fig. 2. CO(1–0) rotation curve near the major axis as derived from the interferometer data and excluding points further than 5° from the major axis. The observed velocities shown here are not corrected for inclination.

antennas of the array were equipped with dual-band SIS receivers yielding SSB receiver temperatures around 40 K at the observing frequency. The spectral correlator backend was centered at 114.996 GHz with a total bandwidth of 360 MHz. The system temperature varied from about 300 K to 400 K (Table 5).

The phase and amplitude calibrations were done in the antenna based mode using the strong quasars 3C273 and 1156+295 (Table 5). The data were corrected for residual atmospheric phase fluctuations. The flux density of the calibrators was determined from IRAM measurements and used to derive the absolute flux density scale in our map. The accuracy of the flux density scale was around 10%.

A mosaic map was made from our observations of six fields separated by 21'' and covering the CO-bright disk of the galaxy. The image reconstruction was done using the GILDAS software. Several visibility tables were created each 2.5 MHz wide; the channel separation was thus 6.5 km s⁻¹. Natural weighting was used with no taper to Fourier transform the visibilities into images.

The six maps were combined to a single dirty mosaic (256 × 256 pixels with 0.45'' sampling), then deconvolved and corrected from primary beam attenuation. The final dirty mosaic was cleaned with the CLARK method and restored with a 3.28'' × 3.0'' Gaussian beam (PA = 35°). To reduce contamination of adjacent fields in the cleaning

Table 5. CO(1–0) observing parameters with the IRAM Interferometer.

Obs. Date	1996 May 5	1996 Oct. 27	1996 Nov. 15	1996 Dec. 15	1997 Apr. 6
Hour Angle	−0.9 to 2.9	−1.0 to 4.9	−0.6 to 3.8	−3.8 to 0.6	−5.0 to −0.8
Configuration	D	D	C	C	D
Calibrator Flux density (Jy)	3C273, 23.7	1156+295, 1.6	3C273, 24.4	3C273, 22.0	3C273, 23.0
Primary Beam	43.8''				
Restoring Beam	3.28'' × 3.00''				
Velocity Resolution	6.5 km s ^{−1}				
Total Bandwidth	360 MHz				
Typical T_{SYS}	300–400 K				

Table 6. Pointing centers of each of the six fields observed as part of the CO(1–0) mosaic with respect to 12^h26^m27.09^s, +31°13'22.0'' (J2000).

Cardinal Position	RA Offset	Dec Offset
North	−11.8''	25.4''
North-East	−13.6''	5.0''
North-West	5.0''	13.6''
South-East	−5.0''	−13.6''
South-West	13.6''	−5.0''
South	11.8''	−25.4''

phase due to border effects, each field was truncated where the primary beam power reaches a level of 10%.

2.2.1. Rotation curve

The rotation velocity of the molecular gas was calculated from the first moment of the Plateau de Bure interferometer CO(1–0) data cube (Fig. 2). Rather than using all channels in our calculations of the velocity at each position, a process which brings in noise because the signal is typically only present in a few channels at any given position, we used the fact that the rotation velocities were roughly known in advance.

The circular velocity V_m given by our initial mass model gives us the approximate central velocity at each position and we have integrated the data over a total of 21 channels (136 km s^{−1}) surrounding the model velocity.

$$V(x, y) = \frac{\sum_{\substack{i=V_m+10 \\ S_i \geq S_0}}^{i=V_m+10} V_i S_i}{\sum_{\substack{i=V_m+10 \\ S_i \geq S_0}}^{i=V_m+10} S_i} \quad (1)$$

The validity of this method was checked by looking at a very large number of spectra “by hand”. The linewidths are much smaller than 21 channels so we are sure that we have included all possible velocities where emission could be present and thus that our moment calculation is not biased towards the model. In the central regions where the line widths are broad we have integrated over a much larger range.

2.3. The large-scale gaseous component

Before comparing the model mass density with the stellar luminosity profiles, we should subtract all of the visible non-stellar mass; namely the gas. In Paper II, we presented CO(1–0) and CO(2–1) observations over almost the entire optical disk of NGC 4414. ¹³CO observations were also made over a large part of the disk in both lines. Using the CO($\frac{2-1}{1-0}$) line ratio to estimate the gas excitation temperature, we used the Virial theorem to estimate the $N(\text{H}_2)/I_{\text{CO}}$ factor to convert CO intensities into H₂ mass densities. As explained in detail in Braine et al. (1997), our estimates were also supported by the ¹³CO and 1.2 mm thermal dust emission maps. We use these results, corrected slightly by the results of our ISO LWS observations (Braine & Hughes 1999), to derive the molecular gas surface density. The total molecular gas mass (including the He in the molecular clouds) is about $6.5 \times 10^9 M_\odot$.

To determine the atomic gas surface density, we have re-reduced the Thornley & Mundy (1997b) HI observations made with the VLA in the C and D configurations. Using uniform weighting the C configuration data were Fourier transformed and CLEANED retaining high angular resolution, $\theta_{\text{fwhp}} = 13.1'' \times 12.5''$. The D configuration data were naturally weighted to obtain high surface brightness sensitivity. The C and D configuration data were combined in the image plane in a flux-conserving way to maintain high angular resolution where the signal is strong and retain the sensitivity to low surface brightness features in the outer regions where angular resolution is not as important. A very simple method was used: when the brightness of the *low* resolution map exceeded a certain value, the output map was a linear combination

$$S = (1 - \eta) \times C + \eta \times D \quad (2)$$

for each pixel where $\eta = 1$ below the threshold and $\eta = \exp^{-aN_D}$ where C and D are the C and D array maps and N_D is the HI column density of the pixel in the D configuration map and a is a constant chosen such that the C array dominates ($\eta \sim 0.1$) in the highest brightness regions. The maximum HI column density in the C array map is 3×10^{21} cm^{−2} and the total mass of the atomic gas (HI plus associated He) is $8.4 \times 10^9 M_\odot$. The total neutral gas mass (HI + H₂ and associated He)

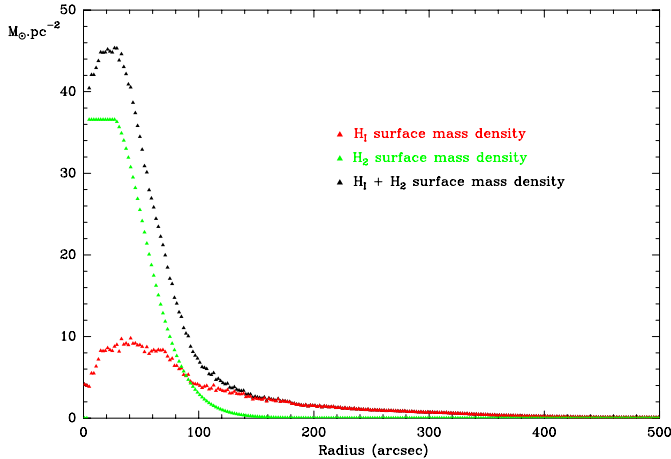


Fig. 3. HI, H₂, and HI + H₂ gaseous surface mass densities corrected to face-on. He is not included in the figure to make it more easily comparable to previously published data.

is then $1.5 \times 10^{10} M_{\odot}$, which we have taken to be the total gaseous mass, neglecting the likely insignificant mass of ionized gas.

The HI and H₂ column density maps were then used to construct the radial surface density profile shown in Fig. 3. With the gaseous surface density known at each radius, we could easily subtract its contribution to the total mass. The high-resolution Plateau de Bure data are not used here because such high angular resolution is not necessary for azimuthally averaged surface densities while it is important not to resolve out flux as is the case for interferometric CO maps of galaxies.

3. Gravitational potential model

In this section we describe the axisymmetric part of the gravitational potential of the flocculent galaxy NGC 4414. Axisymmetry is a good approximation given the morphology of NGC 4414. The asymmetries are relatively small, reaching 20% in the K' band image of Thornley & Mundy (1997a) over only a very small fraction of the disk; this justifies our approach.

To characterize the gravitational potential, we have used the Miyamoto & Nagai (1975) potential which is a particularly flexible and simple *analytic* potential-density pair. We compared with an exponential disk which allows us to retrieve the rotation curve as well as our model, but not better. However the exponential disk model has two dimensions, whereas our model is in three dimensions and can mimic an exponential disk or more spherical forms.

The Miyamoto-Nagai (hereafter M-N) gravitational potential is:

$$\Phi(R, z) = \frac{-GM}{\sqrt{R^2 + (a + \sqrt{z^2 + b^2})^2}}. \quad (3)$$

The M-N potential is free from any singularities and composed of elementary functions. The linearity of Poisson's

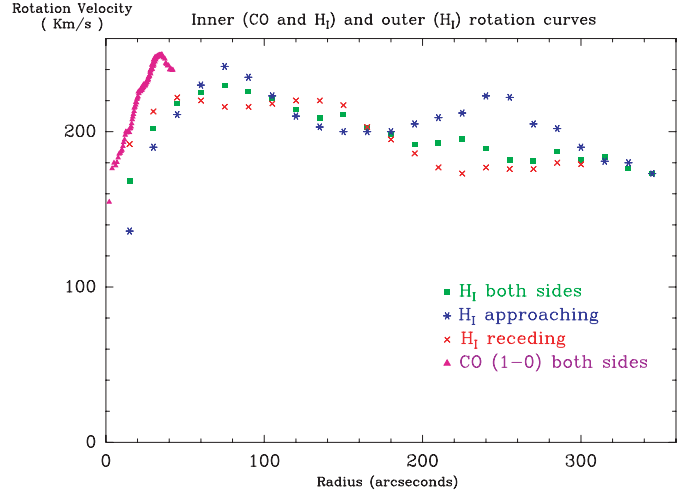


Fig. 4. CO(1–0) interferometric rotation curve as above but corrected for inclination shown with low-resolution HI rotation curve from Thornley & Mundy (1997b).

equation allows us to sum several components corresponding to different regions of the galaxy, such as the nucleus and disk.

$$\begin{aligned} \Phi(R, z) &= \Phi_1(R, z) + \Phi_2(R, z) + \dots \\ &= \sum \frac{-GM_i}{\sqrt{R^2 + (a_i + \sqrt{z^2 + b_i^2})^2}} \end{aligned} \quad (4)$$

$a = 0$ and $b = 0$ correspond to the spherical Plummer potential and the thin-disk Kuzmin potential cases, respectively. To estimate the mass M and to calculate the density $\rho(R, z)$, the Laplace equation has to be solved:

$$\frac{1}{R} \frac{\partial}{\partial R} \left(R \frac{\partial \Phi}{\partial R} \right) + \frac{\partial^2 \Phi}{\partial z^2} = 4\pi G \rho(R, z). \quad (5)$$

Yielding

$$\rho(R, z) = \frac{b^2 M a R^2 + (a + 3\sqrt{z^2 + b^2}) (a + \sqrt{z^2 + b^2})^2}{4\pi (z^2 + b^2)^{\frac{3}{2}} (R^2 + (a + \sqrt{z^2 + b^2})^2)^{\frac{5}{2}}}. \quad (6)$$

The parameters for this kind of model are a , b and M , where a is the dimension of the galaxy (or given component of the galaxy), b the thickness, and M the mass of the galaxy or component described by a and b . The ratio $\frac{a}{b}$ is a measure of the flatness of the component which becomes a sphere for $\frac{a}{b} = 0$.

The in-plane circular velocity $v_c(R)$ of a single component is then given by:

$$v_c(R, z = 0) = \frac{R\sqrt{GM}}{(R^2 + (a + b)^2)^{\frac{3}{4}}} \quad (7)$$

or, for several components Φ_i as in all real cases:

$$v_c^2(R) = \sum_i \left(R \frac{\partial \Phi_i}{\partial R} \right)_{z=0} = \sum_i \left[\frac{R^2 G M_i}{(R^2 + (a_i + b_i)^2)^{\frac{3}{2}}} \right]. \quad (8)$$

Table 7. NGC 4414 components according to the gravitational potential model of Miyamoto & Nagai (1975). The factor $\frac{a}{b}$ indicates the flatness of the component. The total visible mass is about $7.65 \times 10^{10} M_{\odot}$. The thickness (b) of the negative component is not well constrained.

Component	a (pc)	b (pc)	M ($10^9 M_{\odot}$)
Nucleus	70	20	2.5
Nucleus	380	30	4.0
Stellar+Gaseous Disk	2500	150	86
Negative component	11 000	500	16

If the disk is now inclined by an angle α from the line of sight, we could integrate the volumic density ρ along the line of sight, to obtain the surface density. As the volumic density is proportional to the mass of the component under consideration, the surface density is too.

Our choice of components was guided by the CO(1–0) high-resolution rotation curve and by the fact that the mass profile should follow the HST I -band light in the center, which is relatively unobscured by gas and dust. In the outer regions, beyond the interferometer observations, we have been guided by the fact that the lower resolution observations show a much lower amount of gas and dust. We chose the I -band ($F814W$) surface brightness because: (a) the light is less biased to the young stellar population, which represents a small fraction of the mass in a spiral galaxy, and (b) the absorption of light by dust is less than in the B or V -bands ($F439W$ and $F555W$).

Initially, two components were chosen to represent the dynamics of the galaxy, a small bulge component and a thin disk component for the rest. The very high central peak brightness required us to have two central components in the end, even if we could not constrain this region dynamically because no molecular gas is present in the nucleus. We would like to stress that the decomposition into M-N components provide mainly convenient *analytic* expressions for the potential and density following the rotation curve and light profiles in the appropriate regions. The components adopted for the “best” model are given in Table 7. The central components occupy the region with little or no gas and dust and follow the stellar brightness. Virtually all of the visible mass is in a single component which represents the disk, essentially stellar but including the gas as well. A “negative” component with obviously no physical meaning was added in order to make the model fit to the stellar luminosity better in the outer disk; the effect of this component on the velocities within the visible disk is negligible (less than 5%) and is of course included in the calculations.

All of the components are disk-like although the light distribution is slightly “thicker” in the inner few arcseconds. The shape of the smallest component is influenced only by the light because it is so small ($a = 0.7''$) that at radii $r \gtrsim$ few arcseconds the rotation velocity is affected only by its mass and not shape. The two inner components ($a = 0.7''$ and $a = 4''$) enable us to fit the steep rise of the

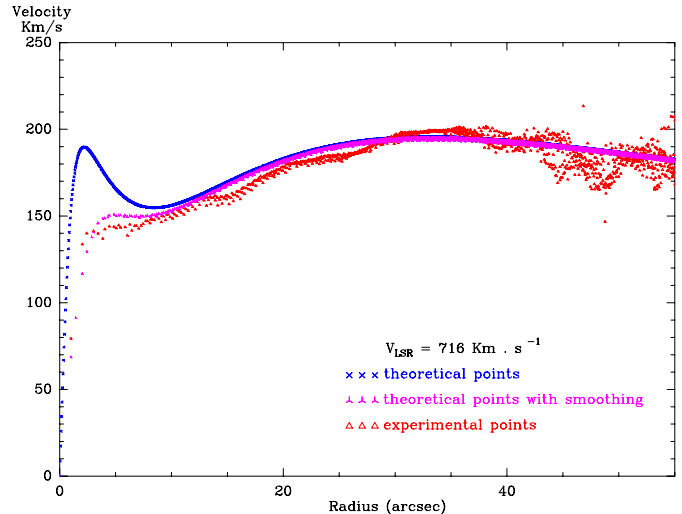


Fig. 5. Variation of the circular velocity in the galaxy NGC 4414 with respect to radius and comparison with interferometric CO(1–0) observational data. The velocities are sky velocities not corrected for inclination.

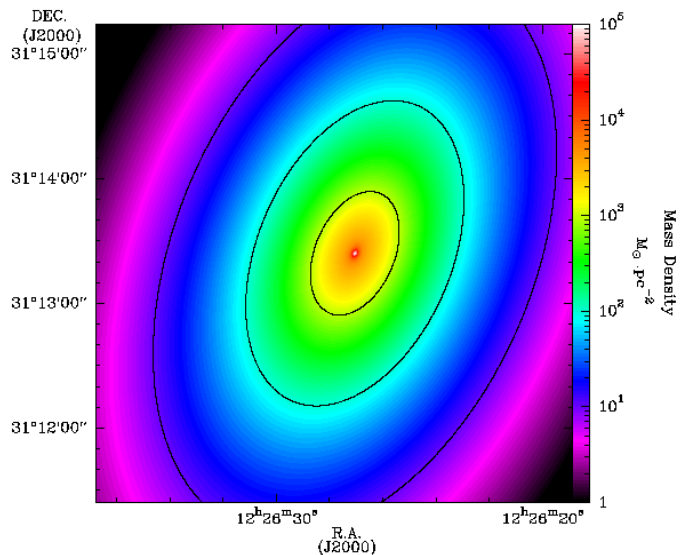


Fig. 6. Projected surface density of the Miyamoto-Nagai model after projection to the same inclination and position angle as NGC 4414. The ellipses represent circles inclined by 55° .

rotation curve. Two M-N components are used to model the stellar + gaseous disk but this should really be viewed as a single structure of mass $7 \times 10^{10} M_{\odot}$ whose mass density drops off more quickly with radius than a single M-N component ($a = 2500$ pc). This disk simultaneously reproduces the inner rotation curve and the luminosity profile at larger radii, where the dust obscuration is known to be lower. It also reproduces the observed disk thickness and inclination. While other, probably more complicated, mathematical formulations could certainly be used, they would have to yield the same result.

To better compare our model to the CO data, we smoothed the model rotation curve using the CO synthesized beam parameters, a $3.28'' \times 3.0''$ Gaussian beam with

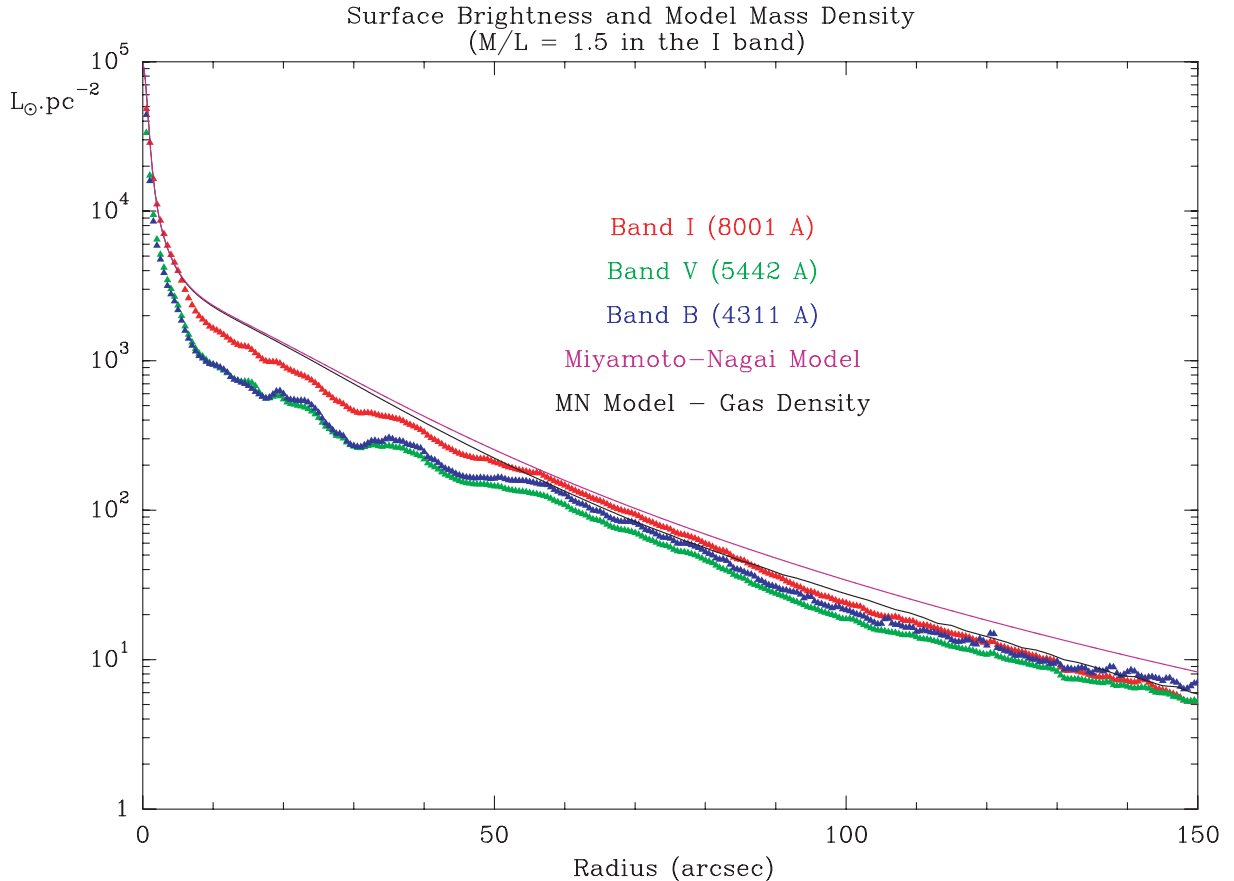


Fig. 7. *B*, *V*, and *I* band HST luminosity profiles of NGC 4414 with projected model mass density superposed as a function of radius. Ordinate is in $L_{\odot} \text{ pc}^{-2}$ where L_{\odot} is the solar luminosity in each of the *B*, *V*, and *I* bands respectively. Solid line is the mass model after subtraction of the gas mass as described in Sect. 2.3, including helium, and scaled assuming $M/L_{\odot} = 1.5$. Note how insignificant the gas mass is at small radii.

a position angle of 35° . The observed and model rotation curves are shown in Fig. 5. An image of the projected surface density of the mass model we have adopted is shown in Fig. 6. Comparison with the observed HST light profiles is shown in Fig. 7.

At this stage, our model only contains visible mass components and these are shown to dominate at radii less than about 10 kpc ($100''$). This enables us to determine the mass-to-light ratio within the optical disk (next section).

4. The M/L ratio

The mass in the central regions of a spiral galaxy is completely dominated by the stellar mass. For NGC 4414 this can be readily seen by taking the dark mass necessary to fit the outer point in the HI rotation curve – roughly $1.5 \times 10^{11} M_{\odot}$ within the last radius and for a spherical distribution – and assuming a shape for the halo. For a rather concentrated “CDM” $\rho \propto r^{-1}$ halo (Navarro et al. 1996), $\rho(R) = M_{\text{tot}}/2\pi R^3 \sim 6 \times 10^{-4} M_{\odot} \text{ pc}^{-3}$ where R is the outer radius of the rotation curve (Fig. 4). At a radius of 10 pc, the density is then about $2 M_{\odot} \text{ pc}^{-3}$ and the mass at $r < 10$ pc is about $10^4 M_{\odot}$. The stellar luminosity is about $10^5 L_{\odot} \text{ pc}^{-2}$, yielding a luminosity in the same

region of $3 \times 10^7 L_{\odot}$. Even for an M/L of unity, the dark matter provides less than 0.1% of the mass in the nucleus. For $\rho \propto r^{-1.5}$ in the halo (Moore et al. 1998, 1999), the dark mass is still only a few percent of the luminous mass. Clearly, with less centrally concentrated haloes, as is typically suggested by observations (Côté et al. 2000; Salucci 2001; de Blok et al. 2001), the central contribution of the dark matter will be even less.

All the conditions are therefore met to derive the stellar M/L ratio in NGC 4414: (a) the distance is known to within $\sim 10\%$; (b) the central stellar luminosity is well known and not greatly obscured (we know this from the CO, HI, and SCUBA observations); (c) all of the other mass components – dark matter, neutral gas, ionized gas, have been shown to be negligible compared to the stellar mass. For all halo profiles yielding the observed outer rotation curve, the luminous mass dominates out to beyond 10 kpc (about $100''$), enabling the stellar M/L ratio to be determined as for the center, the gaseous component being sufficiently well quantified. Following the same calculation as in the previous paragraph, $\rho \propto r^{-1}$ and $r^{-1.5}$ dark matter profiles yield dark masses of $3\text{--}4 \times 10^9 M_{\odot}$ and $6\text{--}8 \times 10^9 M_{\odot}$ within radii of 5 and 7 kpc respectively.

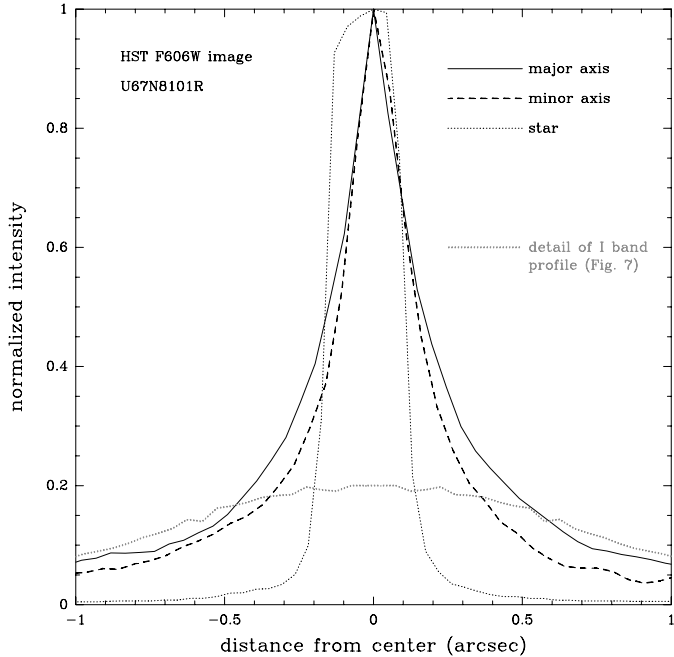


Fig. 8. Cuts across the major and minor axes of the center of NGC 4414 as seen in a 160 s exposure with the HST PC in the F606W filter. For comparison, a cut across a nearby star and the radial *I*-band profile used in the mass model are shown.

This is much less than the stellar mass and thus can not significantly affect our estimates of M/L .

The stellar M/L ratio is then the mass model (after subtraction of the small gaseous component – Sect. 2.3), which is dominated by a single component of scale length 2.5 kpc, divided by the stellar luminosity and is shown in Fig. 9. In the *B* and *V* bands the M/L ratio is between 1.5 and 2 except for radii $5'' < r < 50''$ where it reaches about 4 in solar units. The same structure is seen in the *I* band but with lower amplitudes – M/L is about 1.5 reaching slightly over 2. It is immediately apparent that the high M/L ratios in the *B* and *V* bands at radii $5'' < r < 50''$ are due to extinction by the very abundant dust (Papers I, II, III and Braine et al. in prep.). The intrinsic M/L ratio is about or over unity in each of these bands. The gas mass has been subtracted from the mass model before calculating the M/L . This has no effect in the central regions but becomes important at larger radii (compare gas-subtracted and total mass model curves in Fig. 7 for $M/L=1.5$ in the *I* band).

The increase in M/L at very small radii is not significant. The HST images of the nucleus of NGC 4414 are all, or nearly all, saturated. When combined and reduced to a common $0.1''$ pixel size, the central flux is underestimated. To illustrate this, we compare the central portion of the *I*-band profile shown in Fig. 7 with a cut across the nucleus in a single relatively short F606W filter image where the nucleus falls in the PC portion (Fig. 8). For similar fluxes at $1''$ from the center, the short exposure has 5 times the central flux. Even in this 160 second image, the two central pixels are identical and only 8% below the

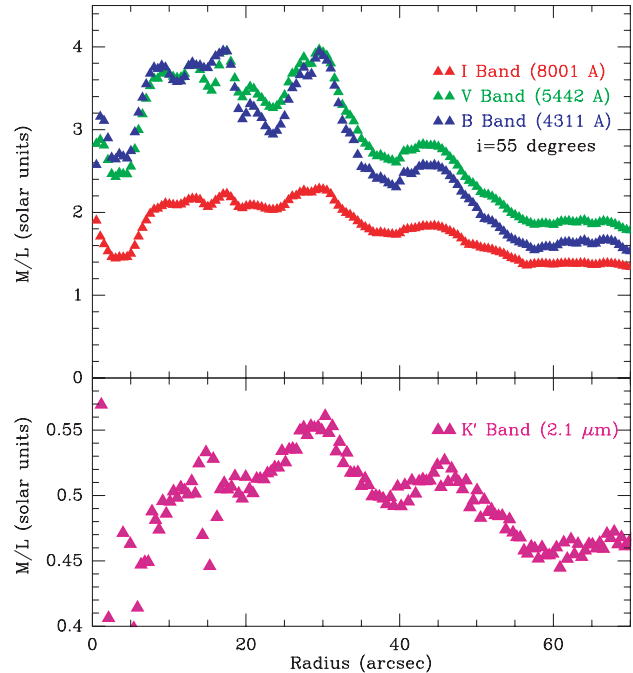


Fig. 9. The variation of the stellar mass to light ratio ($M_{\text{model}} - M_{\text{gas}}/L_*$) in NGC 4414 as a function of radius. Note the much greater variation in the *B* and *V* bands due to the extinction by dust. In the lower panel we show the variation of the mass to light ratio in the *K'* band (observations by Thornley & Mundy 1997b) with a very small range in M/L in order to show the variations which are much smaller than in the shorter wavelength bands. The central region cannot be fairly compared as the *K'* band resolution is much lower than the HST images.

saturated flux of the star about $11''$ away so this image may be slightly saturated as well.

The fact that we see the nucleus of NGC 4414 is an important aid because one is then not tempted to invoke an unknown bulge component which, although only a small contributor over the whole disk could well change the shape of the rotation curve in the inner few kpc. The inner region is crucial because it is where we are sure that the stellar mass dominates the dark mass and where our new high-resolution data provide the necessary information. If the center were covered by dust, it would be very difficult to estimate the bulge component because beyond the central region the bulge light would have to be separated from disk light, introducing serious uncertainties. Seeing the rapid decline in the central luminosity allows us to determine the central light profile.

4.1. Comparison with other estimates of M/L

Few reliable M/L values are available. Pryor & Meylan (1993) studied the mass-to-light ratios for 56 Galactic globular clusters using King-Michie dynamical models. They found a median value of the M/L_V ratio of 2.3. Dubath & Grillmair (1997) derived a similar medium value for 9 globular clusters in M 31. This value is slightly higher

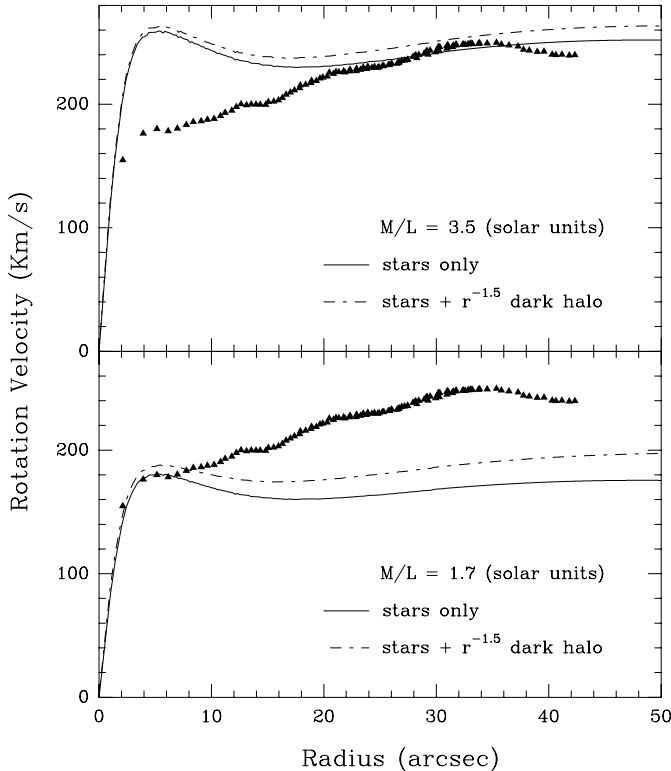


Fig. 10. Model rotation curve for a maximum disk model compared with the high resolution CO(1-0) interferometric data (*full triangle*). We present here a maximum disk model with two possible values of the stellar mass-to-light ratio to account the rotation velocity curve in the first 10'' ($M/L_V = 1.7$) and farther than 20'' ($M/L_V = 3.5$). The gas mass is negligible in this zone as can be seen in Fig. 7. We include a $\rho \propto r^{-1.5}$ DM spherical halo which accounts for the HI rotation velocity in the outer part of the galaxy but has no effect on our conclusions here (*dashed lines*).

than ours ($M/L_V \approx 2$) in the region where dust is less obstructing, and clearly consistent with ours because the stellar population of globular clusters is older than that of the galactic disk.

In Fig. 9 we show K' band mass to light ratio variations in the galactic disk. The value is nearly constant, $M/L_{K'} \approx 0.5$, and close to the near infrared mass to light ratio given by Olling & Merrifield (2001) for the Milky Way disk, $0.3 < M/L_K < 0.7$ in solar units, and well within the range found by Bell & de Jong (2001) through population syntheses. The K' band M/L ratio is low because of the contribution of giants which have a particularly strong effect due to intrinsically low M/L and their very red colors. The K' band variations are the same as in the optical bands, but with weaker amplitudes, about 10% in the K' band, 40 % in the I band and reaching factors of 2–2.5 in the V and B bands. These variations result from absorption of the starlight by dust so fluctuations appear in the same regions of the galaxy for each band. The longer wavelength emission suffers less from the extinction so the variations decrease with wavelength.

The mass to light ratio we show in Fig. 9 can be compared with estimates for other spiral disks, typically obtained through mass modeling with a constant M/L (usually B band) and yielding results equivalent to maximum disk (next subsection). Hoekstra et al. (2001) find B band M/L ratios from 1.2 to 5.8, with an average of 3.5 for full-sized spirals. The extreme values are not outliers but the whole range is covered, which intrinsically would not be expected for spiral disks. We suspect that the large range mostly reflects the different coverage by dust.

4.2. Comparison with maximum-disk model

In a maximum disk model (van Albada & Sancisi 1986; Palunas & Williams 2000) the mass distribution follows the light distribution, the M/L ratio being constant along the luminous disk. The disks are called maximum because as much mass as possible is attributed to the stellar disk without generating circular velocities greater than observed. Typically, the band used is either B or V . To compare with our gravitational model we made a maximum disk model by fitting the HST V -band luminosity curve. We used four Miyamoto-Nagai components to fit the V -band luminosity curve. A very similar fit is obtained in B band. We tested two different values of M/L_V . $M/L_V = 1.7$ fits the inner part of the rotation curve at about 5'' (a true maximum disk model) and $M/L_V = 3.5$ fits the peak of the rotation curve at about 35''. To correctly compare model and observations, we smoothed the velocity field with the same parameters as described in Sect. 3, i.e. a $3.28'' \times 3.0''$ Gaussian beam with a position angle of 35° . To complete this study of the maximum disk we included a $\rho \propto r^{-1.5}$ spherical halo of Dark Matter. The mass of the halo was calculated from the HI data taking a $1.6 \times 10^{11} M_\odot$ ($M/L = 1.7$) or $1.1 \times 10^{11} M_\odot$ ($M/L = 3.5$) sphere with an outer radius of 33.5 kpc (i.e. 360''). A $\rho \propto r^{-1}$ provides a worse fit but the results in this section are quite independent of the dark matter halo.

It appears clearly that the velocities generated by a maximum disk ($M/L = 3.5$) are too high from about 5'' to 15'' (500 to 1500 pc) and that the dark matter halo provides no solution to the problem. The difference is much greater than the observational uncertainties. Lowering the M/L ratio to fit the velocities at small radii ($M/L = 1.7$), say 500 pc, requires a very unphysical dark halo shape.

This shows that a constant M/L ratio, particularly in a short wavelength band such as B or V , is inappropriate. Were the nucleus covered or partially covered by dust, and thus less luminous, we might not have been able to show that M/L cannot be constant.

4.3. The intrinsic M/L ratio

The near constancy of M/L at $2.1 \mu\text{m}$ suggests that the underlying M/L ratio is single-valued over the disk. This is supported by the fact that the increases in K' band M/L occur at the same positions as in the B and V bands,

Table 8. Intrinsic stellar mass to light ratios, corrected for extinction by dust. First column specifies the band, where B refers to the 439W filter, V the 555W, and I the 814W as given in Table 4. Second column is M/L before correction; third column is extinction expressed as optical depth and in mag. in Col. 4. Last column gives our estimate of the intrinsic M/L .

Band	Observed M/L	τ_{ext}	A	corrected M/L
	$55'' \gtrsim r \gtrsim 70''$			
B	1.7	0.7	0.76	0.85
V	1.9	0.54	0.58	1.1
I	1.4	0.3	0.33	1.0
K'	0.46	0.05	0.05	0.42

with a much lower amplitude as expected for extinction, so the overall K' band M/L is very close to its value where less extinction is present, about $[M/L]_{K'} \approx 0.5$. Below we attempt to estimate the intrinsic M/L ratio of the stellar population of the disk of NGC 4414.

The M/L ratios in all bands reach roughly constant levels at radii $r \gtrsim 50''$, outside of the star-forming molecular ring. Without prior knowledge of the intrinsic (unreddened) colors, the best way to estimate the extinction is through the atomic gas column density. The HI column density at these radii is about $2 \times 10^{21} \text{ cm}^{-2}$ (Thornley & Mundy 1997b), such that on average the stellar light will be extinguished by about 10^{21} cm^{-2} . From Fig. 8 of Draine & Lee (1984), we estimate $\tau_{\text{ext}} \approx 2.3 \times 10^{-26} N_{\text{H}}/\lambda$ at the wavelength of the F814 filter and with λ expressed in cm, N_{H} in cm^{-2} . This leads to an I band (F814) extinction of about 0.3 in the regions where the I band M/L reaches a plateau at 1.4.

From Draine & Lee (1984) we estimate the extinction ratio between the HST I and V bands to be about 0.56, between the values given by Rieke & Lebofsky (1985) and Cohen et al. (1981). Similarly, the HST B to V band extinction ratio should be about 1.3, again between the values given by Rieke & Lebofsky (1985) and Cohen et al. (1981). We estimate the ratio between K' and V band extinctions to be about 0.09, slightly lower than in Rieke & Lebofsky (1985) and in agreement with Cohen et al. (1981). Using these extinctions to correct the observed mass to light ratios leads to M/L ratios of roughly unity in the B , V , and I bands. The results are summarized in Table 8.

These values should be viewed as upper limits, although they are likely quite close to the reality, because extinction due to molecular gas has not been included. Molecular clouds are smaller denser objects than HI clouds and are closer to the galactic plane. Thus, they may very strongly obscure a small fraction of the starlight, causing a minor overestimate of the mass to light ratio. At smaller radii the covering fraction of the clouds is certainly significantly higher.

In the molecular ring, the extinction is roughly 1.6 mag in B , 1.3 in V , 0.9 in I , and 0.2 in K' , assuming that the corrected M/L ratios given above are accurate.

In upcoming papers we plan to determine the extinction more accurately by avoiding the azimuthal symmetry hypothesis and studying the whole galaxy point by point. Population syntheses may also help to constrain the intrinsic colors and M/L ratios, using the values here as a starting point. These issues are beyond the scope of this paper.

5. Conclusion

This work leads to the following conclusions:

- The mass model is constrained by the light distribution in the central few hundred parsecs ($r \lesssim 4''$) and at large radii ($r \gtrsim 50''$) and by the high-resolution rotation curve at intermediate radii. A single component dominates the mass over the whole disk so the agreement between the outer light distribution and rotation curve at smaller radii is natural.

- Because the central few hundred parsecs are not covered by dust, we are able to unambiguously show that a constant M/L ratio in the B or V bands is highly incorrect due to extinction at radii of $5'' \lesssim r \lesssim 50''$. A low M/L (1 or 2) requires an enormous, unphysical, DM contribution at radii greater than $15''$ (1.5 kpc). A higher M/L (e.g. 3) gives far too much mass to the bright central region such that the calculated rotation velocities are far greater than observed at $5'' \lesssim r \lesssim 20''$.

- The M/L ratio, shown in Fig. 9, reaches about 4 in the highly obscured radii $5'' \lesssim r \lesssim 50''$ in the B and V bands but is below 2 in the center and the less obscured outer regions. The I band M/L ratio shows the same structure as in B and V but only varies between 1.4 and 2. At the longer K' (2.1 μm) wavelength, the M/L ratio is almost constant at about $0.5 M_{\odot}/L_{\odot, K'}$ but again shows the same absorption regions as in B , V and I .

- The *intrinsic* stellar M/L ratio, corrected for extinction, is close to unity in the B , V , and I bands, and only 0.4 or so in K' band (Table 8). If the recent Freedman et al. (2001) distance is correct, then the M/L given here should be raised by 8.5%, well within the uncertainty of this work.

All of our conclusions deal with the optical disk of NGC 4414 where the visible matter dominates the rotation velocities, such that the uncertainties linked to the DM distribution have no effect on these conclusions. In a companion paper we use our knowledge of the visible mass distribution to constrain the shape of the dark matter envelope.

Acknowledgements. We would like to thank Michele Thornley for providing us with her K' band image. We would also like to thank the referee, G. D. Bothun, for his helpful remarks.

References

- Alcock, C., Allsman, R. A., Alves, D., et al. 1998, *ApJ*, 499, L9
- Ashman, K. M. 1992, *PASP*, 104, 1109
- Bell, E. F., & de Jong, R. S. 2001, *ApJ*, 550, 212
- Braine, J., Brouillet, N., & Baudry, A. 1997, *A&A*, 318, 19
- Braine, J., Combes, F., & van Driel, W. 1993, *A&A*, 280, 451
- Braine, J., & Hughes, D. H. 1999, *A&A*, 344, 779
- Cohen, J. G., Persson, S. E., Elias, J. H., & Frogel, J. A. 1981, *ApJ*, 249, 481
- Côté, S., Carignan, C., & Freeman, K. C. 2000, *AJ*, 120, 3027
- de Blok, W. J. G., McGaugh, S. S., Bosma, A., & Rubin, V. C. 2001, *ApJ*, 552, L23
- de Vaucouleurs, G., de Vaucouleurs, A., Corwin, J. R., et al. 1991, in *Third reference catalogue of bright galaxies (1991)*
- Draine, B. T., & Lee, H. M. 1984, *ApJ*, 285, 89
- Dubath, P., & Grillmair, C. J. 1997, *A&A*, 321, 379
- Freedman, W. L., Madore, B. F., Gibson, B. K., et al. 2001, *ApJ*, 553, 47
- Hauschildt, P. H., Allard, F., & Baron, E. 1999, *ApJ*, 512, 377
- Héraudeau, P., & Simien, F. 1996, *A&AS*, 118, 111
- Hoekstra, H., van Albada, T. S., & Sancisi, R. 2001, *MNRAS*, 323, 453
- Holtzman, J. A., Hester, J. J., Casertano, S., et al. 1995, *PASP*, 107, 156
- Mihalas, D., & Binney, J. 1981, *Galactic astronomy: Structure and kinematics*, 2nd edition (San Francisco, CA, W. H. Freeman and Co., 1981. 608 p.)
- Milgrom, M. 1983, *ApJ*, 270, 365
- Miyamoto, M., & Nagai, R. 1975, *PASJ*, 27, 533
- Moore, B., Governato, F., Quinn, T., Stadel, J., & Lake, G. 1998, *ApJ*, 499, L5
- Moore, B., Quinn, T., Governato, F., Stadel, J., & Lake, G. 1999, *MNRAS*, 310, 1147
- Navarro, J. F., Frenk, C. S., & White, S. D. M. 1996, *ApJ*, 462, 563
- Olling, R. P., & Merrifield, M. R. 2001, *MNRAS*, 326, 164
- Palunas, P., & Williams, T. B. 2000, *AJ*, 120, 2884
- Pogge, R. W. 1989, *ApJS*, 71, 433
- Pryor, C., & Meylan, G. 1993, in *Structure and Dynamics of Globular Clusters*, *ASP Conf. Ser.*, 50, 357
- Renault, C., Aubourg, E., Bareyre, P., et al. 1998, *A&A*, 329, 522
- Rieke, G. H., & Lebofsky, M. J. 1985, *ApJ*, 288, 618
- Sakamoto, K. 1996, *ApJ*, 471, 173
- Salucci, P. 2001, *MNRAS*, 320, L1
- Sofue, Y., & Rubin, V. 2001, *ARA&A*, 37, 137
- Thim, F. 2000, in *The Impact of Large-Scale Surveys on Pulsating Star Research*, *ASP Conf. Ser.* 203, *IAU Colloq.*, 176, 231
- Thornley, M. D., & Mundy, L. G. 1997a, *ApJ*, 484, 202
- Thornley, M. D., & Mundy, L. G. 1997b, *ApJ*, 490, 682
- Turner, A., Ferrarese, L., Saha, A., et al. 1998, *ApJ*, 505, 207
- van Albada, T. S., & Sancisi, R. 1986, *Royal Society of London Philosophical Trans. Ser.*, 320, 447