

# Vigorous convection in a sunspot granular light bridge<sup>★</sup>

Andreas Lagg<sup>1</sup>, Sami K. Solanki<sup>1,2</sup>, Michiel van Noort<sup>1</sup>, and Sanja Danilovic<sup>1</sup>

<sup>1</sup> Max Planck Institute for Solar System Research, Justus-von-Liebig-Weg 3, 37077 Göttingen, Germany  
e-mail: [lagg; solanki; vannoot; danilovic]@mps.mpg.de

<sup>2</sup> School of Space Research, Kyung Hee University, Yongin, 446-701 Gyeonggi, Republic of Korea

Received 25 April 2014 / Accepted 20 June 2014

## ABSTRACT

**Context.** Light bridges are the most prominent manifestation of convection in sunspots. The brightest representatives are granular light bridges composed of features that appear to be similar to granules.

**Aims.** An in-depth study of the convective motions, temperature stratification, and magnetic field vector in and around light bridge granules is presented with the aim of identifying similarities and differences to typical quiet-Sun granules.

**Methods.** Spectropolarimetric data from the Hinode Solar Optical Telescope were analyzed using a spatially coupled inversion technique to retrieve the stratified atmospheric parameters of light bridge and quiet-Sun granules.

**Results.** Central hot upflows surrounded by cooler fast downflows reaching  $10 \text{ km s}^{-1}$  clearly establish the convective nature of the light bridge granules. The inner part of these granules in the near surface layers is field free and is covered by a cusp-like magnetic field configuration. We observe hints of field reversals at the location of the fast downflows. The quiet-Sun granules in the vicinity of the sunspot are covered by a low-lying canopy field extending radially outward from the spot.

**Conclusions.** The similarities between quiet-Sun and light bridge granules point to the deep anchoring of granular light bridges in the underlying convection zone. The fast, supersonic downflows are most likely a result of a combination of invigorated convection in the light bridge granule due to radiative cooling into the neighboring umbra and the fact that we sample deeper layers, since the downflows are immediately adjacent to the slanted walls of the Wilson depression.

**Key words.** sunspots – Sun: photosphere – Sun: granulation – Sun: magnetic fields – techniques: polarimetric

## 1. Introduction

The strong magnetic field in sunspots effectively hinders the overturning motion of the plasma in the sunspot umbral photosphere (Biermann 1941; Gough & Tayler 1966). The reduced energy input from below leads to a lowering of the temperature in photospheric layers. This low temperature in combination with the decreased gas density, caused by the displacement of gas due to the magnetic pressure, significantly decreases the opacity of the solar atmosphere, allowing us to see a few hundred kilometers deeper than in quiet regions of the Sun (Wilson depression, Loughhead & Bray 1958).

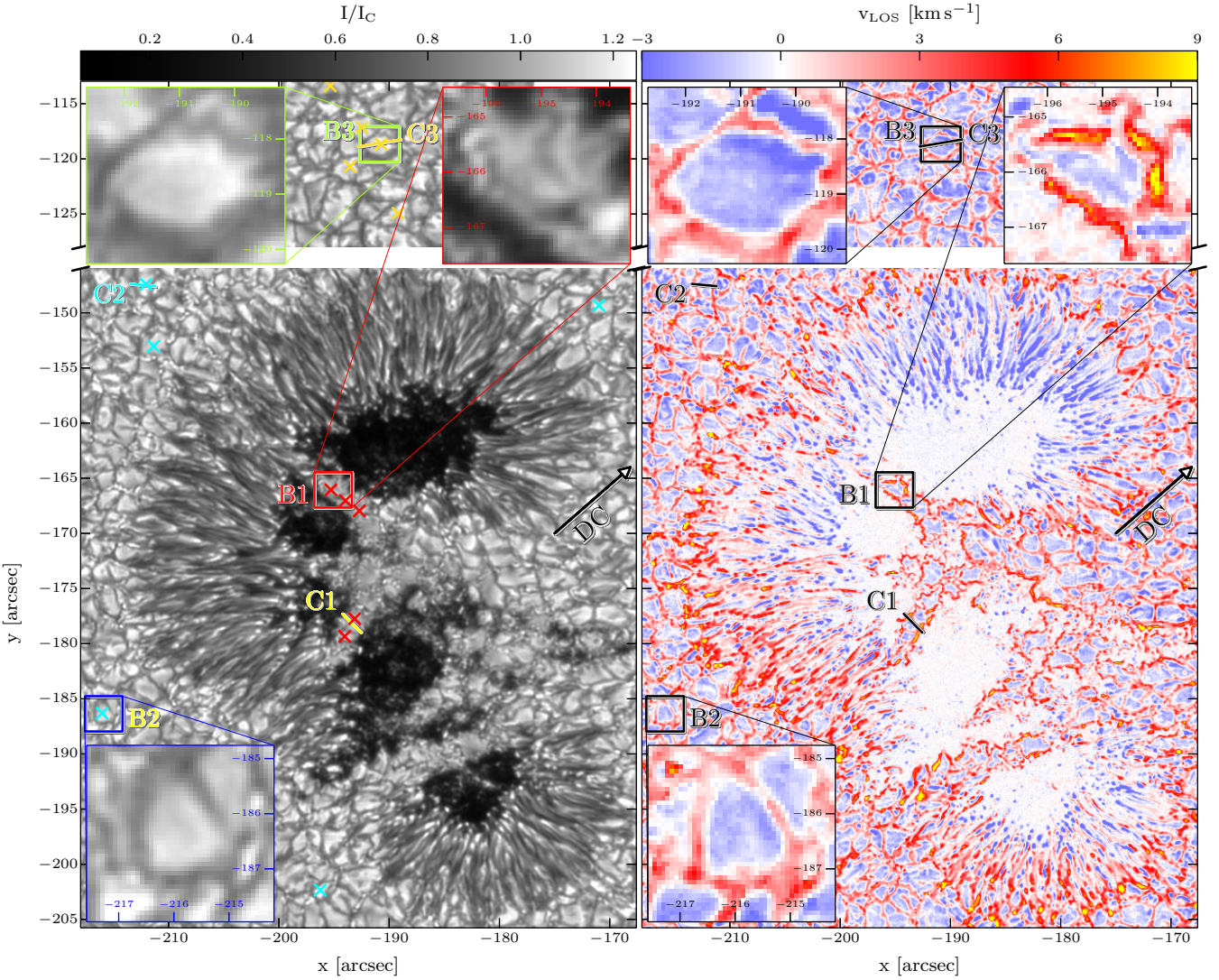
Bright structures within the umbra are signatures of not completely suppressed convection. The best known representatives of these structures are light bridges and umbral dots. Here we concentrate on light bridges.

Light bridges (LBs) can be categorized by their brightness and size. Faint light bridges (FLBs, e.g., Sobotka & Puschmann 2009; Sobotka et al. 1993; Lites et al. 1991) are elongated structures in sunspot umbrae composed of grains of similar size and structure to umbral dots. Strong light bridges (e.g., Sobotka et al. 1993; Rimmele 2008; Rezaei et al. 2012) with a typical brightness comparable to the penumbra often separate the umbra into two regions of the same polarity. Granular light bridges (GLBs), sometimes also called photospheric light bridges (e.g., Vazquez 1973; Lites et al. 1991; Sobotka et al. 1994; Leka 1997; Rouppe van der Voort et al. 2010), show fully developed convective cells similar to the granules in the quiet-Sun. All types

exhibit a significantly reduced field strength in the photosphere with a cusp-like magnetic field configuration at higher layers (Jurčák et al. 2006), which for faint and strong light bridges is accompanied by a central dark lane originating from an enhanced density in the cusp (Spruit et al. 2010). Central upflows surrounded by downflows toward the umbra, sometimes at supersonic speeds (Louis et al. 2009; Bharti et al. 2013), point to the convective origin of LBs. Such high-speed downflows at the edges of granular cells directly adjacent to sunspot umbrae have already been observed by Shimizu et al. (2008a). The chromospheric activity above light bridges is often enhanced and manifests itself in the form of jets, surges, and brightenings in, say, Ca II H (Shimizu et al. 2009). Apart from these dynamic events, the magnetic field configuration in the upper chromospheric layers becomes very similar to the umbral environment (Ruedi et al. 1995b; Joshi 2014).

The mechanism producing granular light bridges is believed to be distinctively different from the formation of other convective phenomena in sunspots like penumbral filaments or umbral dots. Whereas the latter are believed to be the consequence of magneto-convection within a 1–2 Mm thick layer beneath the photosphere (Schüssler & Vögler 2006; Rempel et al. 2009a,b), thicker light bridges are attributed to intrusions of field-free plasma from deep beneath sunspots (Rempel 2011; Leka 1997) or to the inward motion of hot gas from the penumbra triggered by sub-photospheric flows crossing the sunspot (Katsukawa et al. 2007). Broad light bridges often consist of several granular convection cells along the light bridge axis. The presence of such granulation cells embedded in the low-density, transparent environment of sunspot umbrae and the resulting exposure

<sup>★</sup> The two movies are available in electronic form at <http://www.aanda.org>



**Fig. 1.** Continuum map of AR10926 composed from the fitted Stokes  $I$  profiles (*left*) and LOS velocity map at  $\log \tau = 0.0$  (*right*). Positive values (red/yellow colors) denote downflows. The direction toward the disk center (DC) is indicated by the black arrow. The boxes (B1), (B2), and (B3), and the lines (C1) (in the center), (C2) (*top left*), and (C3) (*top center*) correspond to regions analyzed in Sect. 4. The red, cyan, and yellow crosses in the continuum image mark the granules used to determine the average atmospheric parameters in Table 1 for LBGs, PLGs, and QSGs, respectively.

of their walls allow probing the physical conditions in deep layers of such cells, which are otherwise not accessible to direct observation.

This possibility motivated us to investigate the properties of granular light bridges based on the physical parameters determined from spatially coupled inversions of Hinode spectropolarimetric data. The observations and the analysis method are described in Sects. 2 and 3, respectively. We present the properties of light bridge granules in Sect. 4 and compare these with their quiet-Sun counterparts. We then discuss the observed configuration in Sect. 5 and summarize the results in Sect. 6.

## 2. Observations

Spectropolarimetric data of the leading spot of AR10926 were obtained using the spectropolarimeter of the Hinode Solar Optical Telescope (SOT/SP, Kosugi et al. 2007; Tsuneta et al. 2008; Suematsu et al. 2008; Ichimoto et al. 2008; Shimizu et al. 2008b; Lites et al. 2013) on November 30 2006 UT 23:40–00:05. The center of the analyzed region was located at the solar

position  $x = -184''$ ,  $y = -160''$ , corresponding to a heliocentric angle of  $\Theta = 14.5^\circ$  ( $\mu = \cos \Theta = 0.97$ ). SOT/SP was operated in “normal map” mode with a pixel size of  $0''.16$  in both, the slit and the scan direction. The exposure time per slit was 4.8 s, resulting in a noise level in the quiet-Sun of typically  $1.1 \times 10^{-3} I_C$  in Stokes  $Q$ ,  $U$ , and  $V$ . Standard data reduction tools from SolarSoft were applied to reduce the data (Lites & Ichimoto 2013). Averages over the dark umbral regions of the sunspot were used to determine the central wavelength of the Fe I lines, defining the averaged line-of-sight (LOS) velocity in the umbra to be zero.

The lefthand panel of Fig. 1 displays the continuum image of AR10926 composed from the individual fits to the Stokes  $I$  profiles of the SOT/SP observation on the interpolated grid (pixel size  $0''.08$ , see Sect. 3). AR10926 came across the east limb on November 24 2006. SOHO/MDI images indicate that already then the sunspot umbra was divided into several unipolar regions separated by strong light bridges. The decaying sunspot disappeared behind the west limb on December 8. The segmentation of the umbra into 3–6 parts separated by strong, granular light

bridges could be observed from November 26 until December 4, indicating that the sunspot structure presented in Fig. 1 represents a quite stable configuration (see the animation attached to Fig. B.1). The movie of the temporal evolution of the sunspot obtained using the Hinode SOT Broad-band Filter Imager (BFI) at the time of the SOT/SP scan in *G*-band (left) and Ca II H (right) is attached to Fig. B.2<sup>1</sup>. These movies indicate that there was no enhanced activity, beyond what is normal for the immediate surroundings of sunspots, visible above the light bridges, neither in the *G*-band nor in the Ca II H line. Note the dark lines running roughly along the middle of some of the light bridges in the Ca II H movie. The LOS velocity map, resulting from the inversion described in Sect. 3 (right panel), nicely illustrates the strong downflows all along the edges of the granular light bridges.

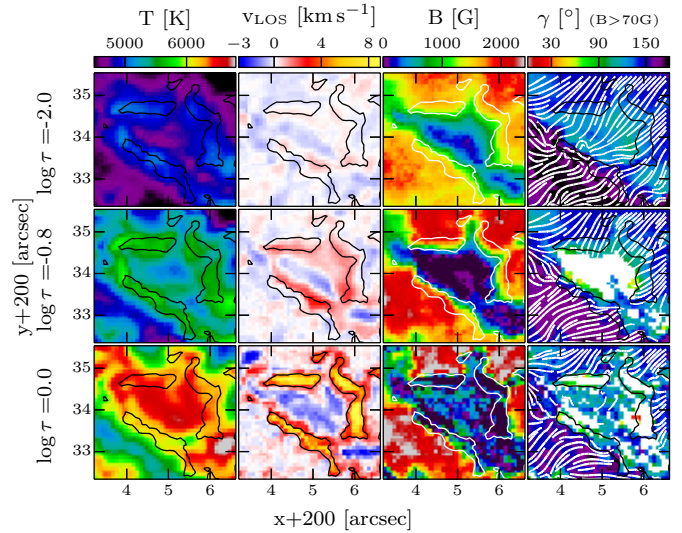
The inset (B1) in Fig. 1 shows a typical “granular” cell within a granular light bridge. We name these cells “light bridge granules” (LBGs). Several dark lanes can be identified in the continuum image indicating a lower temperature at the  $\tau = 1$  layer. In this study, we compare the properties of several such LBGs with those of “plage granules” (PLGs) and “quiet-Sun granules” (QSGs) found in the same data set, typical examples of those are shown enlarged in boxes (B2) and (B3) of Fig. 1, respectively. The analyzed PLGs are located approximately 5–10'' away from the visible penumbra boundary, the region for the QSGs lies approximately 20–30'' north of the penumbral boundary (note the break in the *y*-axis in Fig. 1), where the weakly polarized Stokes profiles indicate an area of very low magnetic field.

### 3. Analysis method

The spectropolarimetric data in the Fe I 6301.5/6302.5 Å line pair were inverted using the SPINOR inversion code (Frutiger et al. 2000; Frutiger 2000), which employs the STOPRO routines of Solanki et al. (1987), in its spatially coupled version (van Noort 2012). On a grid with a pixel size of 0''.08, corresponding to half the SOT/SP pixel and scan step size, this inversion technique self-consistently takes into account the spreading of the photons due to the point-spread-function (PSF) of the telescope (van Noort et al. 2013). This approach was found to reproduce complex multi-lobed profiles with a simple, one-component atmosphere per pixel. The complexity of the profiles appears to be produced mainly by the influence of the PSF. The spatially coupled approach was found to significantly enhance the reliability and the robustness of the inversion results.

Every pixel was fitted using a height dependent atmosphere under local thermodynamic equilibrium (LTE) conditions at three nodes in  $\log \tau$ , the logarithm to the base 10 of the optical depth. The nodes were placed  $\log \tau = -2.0$ ,  $-0.8$ , and  $0.0$ , with the free parameters temperature (*T*), magnetic field strength (*B*), magnetic field inclination with respect to the (LOS) and azimuth ( $\gamma$ ,  $\chi$ ), LOS velocity ( $v_{\text{LOS}}$ ), and a micro-turbulent velocity ( $v_{\text{mic}}$ ). No further broadening mechanism (e.g., macro-turbulence) or straylight correction were applied.

It is an intrinsic problem of inversions to compute reliable error estimates for the retrieved parameters. The coupling between the pixels through the PSF adds additional complexity to this



**Fig. 2.** Light bridge granule (LBG, inset (B1) in Fig. 1): plotted are from left to right: temperature *T*, LOS velocity, magnetic field strength *B*, and inclination  $\gamma$  (color scale) of the magnetic field to the LOS for the three  $\log \tau$  nodes used in the inversion (from top to bottom). The azimuth is overplotted as white lines on the inclination plots (rightmost panels). Inclination and azimuth lines are only plotted for  $B > 70$  G. The black contour lines enclose regions of LOS velocities greater than  $+3 \text{ km s}^{-1}$  in the deepest layer.

problem. However, the inversion technique and the model atmosphere applied here were established from extensive testing and comparisons with traditional inversion techniques (van Noort 2012; Buehler et al. 2013; Riethmüller et al. 2013; Tiwari et al. 2013), and proven to be superior in both, the reliability of the parameter retrieval and the robustness of the convergence. Due to the conceptual difficulty to obtain error bars of spatially coupled inversion results (see Sect. 3 of van Noort et al. 2013) we refrain from quantifying errors for the individual pixels of the inverted maps. However, we would like to point out that the features discussed in detail in the following sections are seen in all granules investigated, irrespective of their position within the sunspot, their orientation, their size, and their surroundings. It appears unlikely to us that a systematic error or a lack of signal would produce a unique solution under such varying conditions.

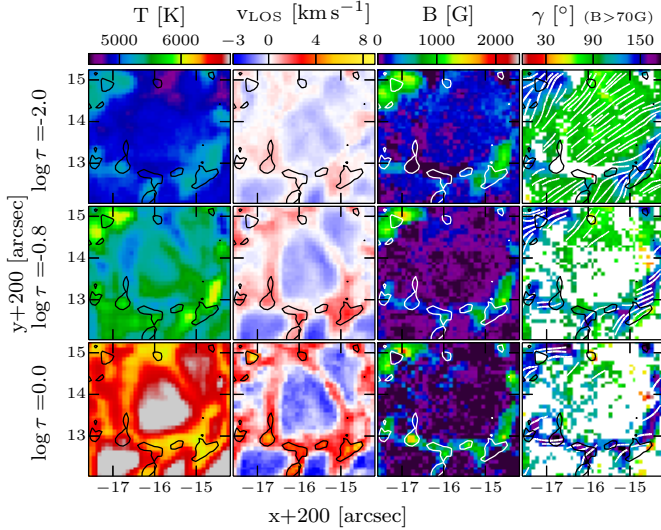
## 4. Atmospheric parameters of granules in light bridges and outside the sunspot

### 4.1. Maps of atmospheric parameters

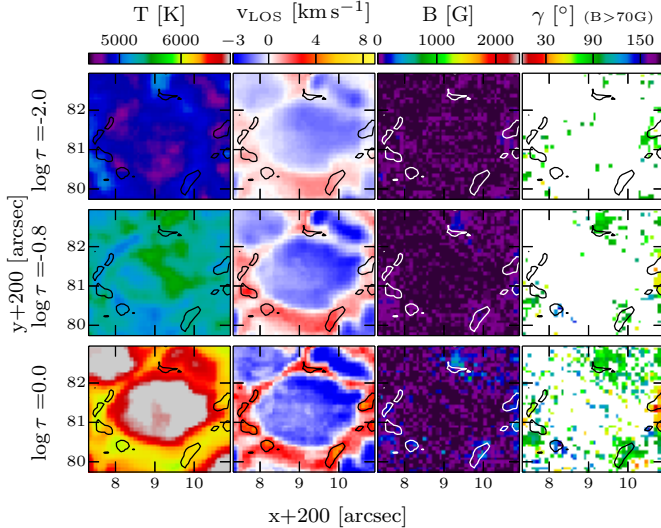
The temporal evolution of AR10926 indicates the convective nature of its light bridges. The long axis of each light bridge consists of a chain of convective cells with widths typical of quiet-Sun granules (1–2''). The atmospheric parameters derived from the inversions of the Stokes parameters allow us to confirm and to characterize the convective nature of these cells. As an example, in Fig. 2 we present maps of the temperature, LOS velocity, and the strength and direction of the magnetic field for the three  $\log \tau$  nodes used during the inversion of a typical LBG.

The temperature and the LOS velocity maps of the LBG (first two columns in Fig. 2) show clear evidence for convection: a central upflow of hot material in the deepest layer (bottom row) is surrounded by a downflow of cooler material. With increasing height the granular interior cools down more rapidly than the surrounding, giving the impression of reversed granulation in the

<sup>1</sup> All movies are also available on the website of the Max Planck Institute for Solar System Research: [http://www.mps.mpg.de/homes/lagg/OnlineMaterial/2014\\_LightBridge/G-band](http://www.mps.mpg.de/homes/lagg/OnlineMaterial/2014_LightBridge/G-band) (long time series): `gband_gap.avi`, *G*-band and Ca II H (short time series): `ca_gb.avi`



**Fig. 3.** Same as Fig. 2 for a plage granule (PLG, inset (B2) in Fig. 1). The same color scales were chosen as in Fig. 2 to facilitate comparison.



**Fig. 4.** Same as Fig. 2 for a quiet-Sun granule (QSG, inset (B3) in Fig. 1).

highest layer (e.g., Cheung et al. 2007). The magnitude of both, up- and downflow velocities decreases with height. This general pattern is very similar to that of “normal” granules, located in plage and quiet-Sun regions (PLGs and QSGs), presented in Figs. 3 and 4, respectively.

We note that the values of the physical parameters for the “normal” granules in plage and quiet-Sun regions (PLGs and QSGs) are very similar and show the typical signatures of convective cells. Temperature and  $v_{\text{LOS}}$  stratification in PLGs and QSGs are almost indistinguishable and show the expected properties of a central upflow, decreasing in magnitude with height, surrounded by downflows in the intergranular lanes, with the highest velocities in the deepest layer. The magnetic properties of PLGs and QSGs differ only in two aspects: the boundaries of PLGs show magnetic field strengths that are significantly increased, typically by a few hundred Gauss at the resolution of these data, and the interior of PLGs shows an enhanced horizontal magnetic field in the top layer. In contrast, the QSG shows a field-free interior at all heights and only weak fields of on

**Table 1.** Average atmospheric parameters for the interiors and the boundaries of several LBGs, PLGs, and QSGs.

Parameter	$\log \tau$	Interior			Boundary		
		LBG	PLG	QSG	LBG	PLG	QSG
$T$	-2.0	4810	4950	4870	4980	5010	4910
[K]	-0.8	5330	5430	5360	5550	5440	5300
	0.0	6590	6810	6780	6290	6340	6300
$B$	-2.0	280	180	20	1400	270	20
[G]	-0.8	60	40	20	1320	230	40
	0.0	170	40	30	320	280	90
$\gamma$	-2.0	120	92	89	142	103	89
[°]	-0.8	108	94	91	129	108	92
	0.0	108	98	92	95	112	94
$v_{\text{LOS}}$	-2.0	-320	-300	-250	260	640	530
[m s <sup>-1</sup> ]	-0.8	-470	-730	-690	870	1170	870
	0.0	-930	-1080	-980	5220	2210	1790

average 100 G in the deepest layer of the intergranular lane. The PLGs do appear to be smaller, on average, than the QSGs.

In spite of the general similarity, there are significant differences between the LBGs, on the one hand, and the QSGs and PLGs, on the other. Thus, there is a basic difference in the geometry. While in the latter the downflows are localized at roughly the same place at all heights, they lie closer together in the LBGs at higher layers, i.e., the LBGs appear to shrink with height. This difference in geometry was taken into account when making a quantitative comparison between the three different types of granules (LBGs, PLGs, and QSGs), e.g., via the averaged numbers summarized in Table 1. The values in the table represent mean values of atmospheric parameters over manually selected interiors and boundary regions of five LBGs, PLGs, and QSGs each, marked with the red, cyan, and yellow crosses in Fig. 1. The interiors of granules are defined as the regions where all three height layers show upflows, in order to reflect the shrinking of especially the LBGs with height. The boundary regions are defined using the fast downflow regions in the deepest layer.

The most striking difference in Table 1 is the downflow velocity in the lowest layer ( $\log \tau = 0$ ). These averaged downflows in LBGs are more than a factor of 2 larger than those in the “normal” granules. The same is true for the maximum downflow velocities at the boundaries of the LBGs, which reach values of  $10 \text{ km s}^{-1}$  compared to the maximum values of  $3\text{--}4 \text{ km s}^{-1}$  in the darkest parts of the intergranular lanes of “normal” granules. The average temperature in the LBGs at the location of these fast downflows ( $\log \tau = 0$ ) is similar to the average temperatures at the boundaries of PLGs and QSGs, but is on average  $140\text{--}250 \text{ K}$  higher in the middle layers (at  $\log \tau = -0.8$ ). The temperature in the center of the LBG is lower than in the PLG, with an increasing difference of  $\approx 140 \text{ K}$  to  $\approx 220 \text{ K}$  from the top to the bottom layer. This leads to the interesting feature that the radial temperature profile in the deepest layer of LBGs, i.e., the temperature difference between the granular interior and the boundaries, is rather flat ( $\approx 300 \text{ K}$  difference) whereas in the “normal” granules the interior is significantly hotter than the intergranular lanes. The central upflow above the LBG narrows with height to form a thin, elongated sheet parallel to the light bridge axis. In contrast, the shape of the upflow region in PLGs and QSGs remains unchanged with height. The upflow velocities in the interiors at all heights are comparable, reaching maximum values of  $\approx 2 \text{ km s}^{-1}$  in the deepest layer and  $1 \text{ km s}^{-1}$  in the top layer.

A striking common feature in the magnetic field strength maps (3rd column of Figs. 2–4) is the almost complete absence of a magnetic field in the middle and bottom layer of the cellular

interior in all three types of granules. For the LBG, a sharp transition exactly at the outer edge of the fast downflows separates these field-free regions from the umbral field with strengths of more than 2 kG at  $\log \tau = 0$ . The top layer of the LBG already exhibits field strengths close to one kG, with lower field strengths of  $\approx 200$  G within the elongated upflow region. In combination with the magnetic field orientation presented in the inclination maps (4th column of Fig. 2) the picture of a cusp-like field configuration closing above the field-free region in the middle to upper photosphere becomes evident. The dark lines overlying the light bridge harboring this LBG in the Ca II H movie provides further support for this picture. The temperature is lower at the upflow at  $\log \tau = -2$  in the LBG, whereas it is relatively flat in the other granules. This is consistent with the presence of a cusp in the field above the upflow lane, so that we see higher and cooler layers there.

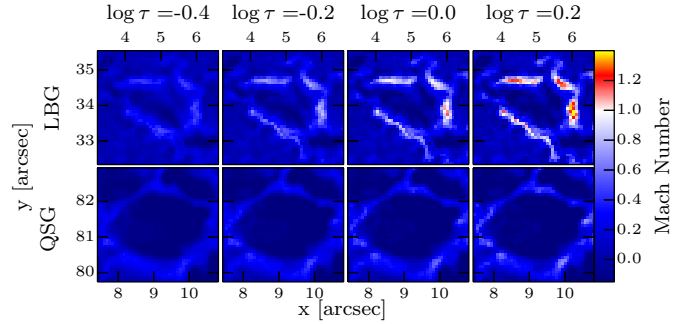
A hint of opposite polarity field is present in the inclination maps in the middle and deepest layers of LBGs, located at the innermost boundary of the fast downflows. These opposite polarity fields are very weak. It is therefore difficult to judge how trustworthy their presence is. However, it should be noted that these weak, opposite polarity fields are present at the same location in all LBGs investigated in the course of this study, irrespective of their orientation.

The magnetic field in the plage and the quiet-Sun is concentrated in the intergranular lanes, where it reaches kG and hG values (Lagg et al. 2010), respectively (see Figs. 3 and 4). In the highest layer the field strength in the PLG above the field-free granular interior is slightly above the detection threshold of  $\approx 50$  G (for horizontal fields). There the field is mainly horizontal and shows a clear preferred orientation toward the spot. This configuration is consistent with a low lying sunspot canopy field extending radially away from the sunspot outside the visible sunspot boundary (Giovannelli 1980; Giovannelli & Jones 1982; Solanki et al. 1992, 1994, 1999; Buehler et al., in prep.). In contrast, the interior of QSGs is field-free at all heights.

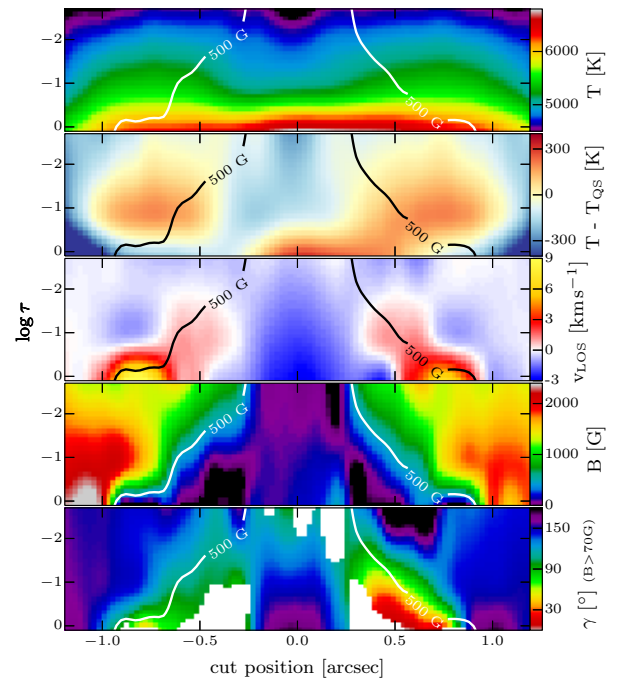
The fast downflows of up to  $10 \text{ km s}^{-1}$  at the edges of LBGs in the deepest layers suggest that these flows are supersonic. To verify this we compute the Mach number  $M = v/c_s$  using the thermodynamic parameters gas pressure,  $p$ , and density,  $\rho$ , provided by the inversion for every pixel and height grid point in our maps. The equation of state look-up tables from the radiative magneto-hydrodynamic (MHD) code MURaM (Vögler et al. 2005) are used to compute the sound speed in the general form  $c_s = \sqrt{(\partial p / \partial \rho)_S}$ , where the partial derivative is taken adiabatically, i.e., at constant entropy  $S$ . The MURaM tables take into account the effects of partial ionization. We use  $v_{\text{LOS}}$  to compute a lower limit of the Mach numbers presented in Fig. 5 for the LBG (top row, box (B1) in Fig. 1) and the QSG (bottom row, box (B3)). Since the very high speed downflows are concentrated only in the deepest layers of the photosphere, the Mach number maps are only shown for  $\log \tau = [-0.4, -0.2, 0.0, +0.2]$  (from left to right). The maps nicely illustrate that in the deepest layers ( $\log \tau > -0.2$ ) the maximum vertical velocities at the edges of the LBG exceed the local sound speed (up to  $M \approx 1.5$ ), whereas in the quiet-Sun the velocities clearly remain subsonic at all heights ( $M \lesssim 0.6$ ).

#### 4.2. Vertical cuts

For the solution of the radiative transfer equation the inversion code SPINOR computes the atmospheric stratification on a much finer vertical (i.e.,  $\log \tau$ ) grid than given by the three height nodes



**Fig. 5.** Mach number  $M$  determined from the LOS velocity and the thermodynamic parameters retrieved from the inversion for the LBG (top row, see Fig. 2) and a QSG (bottom row, see Fig. 4). The maps only show the very deep photospheric layers from  $\log \tau = -0.4$  (left) to  $\log \tau = +0.2$  (right). Supersonic velocities are indicated by red/yellow colors, subsonic velocities by blue colors. Negative values denote the Mach number for upflows.



**Fig. 6.** Vertical cut through a LBG (see cut (C1) in Fig. 1). From top to bottom (panels 1 to 5): temperature, temperature difference to an average quiet-Sun atmosphere, LOS velocity, magnetic field strength, and magnetic field inclination. The inclination is only shown for field strengths greater than 70 G. A 500 G contour line is overlotted.

at which the atmospheric parameters are varied as part of the  $\chi^2$  minimization process. This fine grid allows for vertical cuts through the atmospheres which nicely illustrate the atmospheric stratification in the three different types of granules described in Sect. 4.1. It would be preferable to study the height stratification on a geometric scale and not on a  $\log \tau$  scale. Unfortunately, the conversion between these scales is not straightforward and requires, among other things, a knowledge of the magnetic curvature force (see, e.g., Mathew et al. 2004), which we do not know how to obtain from the existing SOT/SP data set for the complex field geometries analyzed in this paper. The atmospheric parameters on this finer grid are obtained by a spline interpolation between the three height nodes (for  $T$ ,  $B$  and  $v_{\text{LOS}}$ ). Such cuts are presented in Figs. 6–8 for a LBG, PLG, and a QSG, respectively.

The locations of these cuts are indicated by the lines marked with (C1), (C2), and (C3) in Fig. 1. The  $\log \tau$  range for these cuts is limited to values between +0.1 and -2.7, a region where the response functions of the FeI 630 nm line pair are sufficiently high to obtain trustworthy values for the atmospheric parameters.

The second panel of Fig. 6 emphasizes the enhanced temperature located vertically above the strong downflows, by showing the difference between the temperature across a LBG and an averaged quiet-Sun temperature profile, determined by averaging the temperature profiles over an  $8'' \times 8''$  large region in the lower lefthand corner in Fig. 1. These regions of enhanced temperature difference in Fig. 6 are accompanied by upflows of  $\approx 1 \text{ km s}^{-1}$  directly above the high-speed downflows in the deepest layer (see panel 3). The central upflow and the cusp-like shape over the field-free interior of the LBG is nicely outlined in the velocity map in panel 3 and the magnetic field strength map in the fourth panel. The weak opposite polarity fields at the inner edges of the downflows are clearly visible in the inclination map (bottom panel).

Figures 7 and 8 show a vertical cut through a PLG and a QSG (cut (C2) and (C3) in Fig. 1) each. Similar to the LBG, the central upflow, surrounded by the downflows in the intergranular lanes, nicely outlines the convective motion in the granule. In contrast to the LBG, the temperature at the boundary of the granule (the intergranular lane) is lower than the averaged quiet-Sun temperature profile. The magnetic field of the PLG is concentrated in the highest layer, where it shows a horizontal, low-lying canopy configuration.

## 5. Discussion

It was shown in Sect. 4 that the atmospheric conditions in the lower layers of the LBG interior are qualitatively similar to the interior of “normal” granules in plage and quiet-Sun regions. This suggests a common origin for the convective motion creating these cells, which for the granulation pattern in the quiet-Sun is known to be a result of the cooling and hydrogen recombination within the plasma parcels when they reach the low opacity layer of the solar surface. Unlike the surface convection responsible for umbral dots and faint light bridges, which takes place in a 1–2 Mm thick layer immediately below the solar surface (e.g., Schüssler & Vögler 2006), the convection cells responsible for granular light bridges are rooted deeper in the underlying convection zone (Rempel 2011). This interpretation is supported by the near absence of magnetic field in the interior of the LBGs (see also Sobotka et al. 2013), distinctly different from the significant field strengths measured in the deep layers of umbral dots, which is lower by only  $\approx 500 \text{ G}$  than in the surrounding umbra (Riethmüller et al. 2013). These field-free regions are only found in the interiors of granular LBs. Narrower LBs however, harbor hecto-Gauss fields in their interior (Jurčák et al. 2006).

Another indication for the deep anchoring of granular light bridges is their long-term stability. SOT/BFI observations demonstrate, that the granular light bridges in the active region studied here appeared already 4–5 days before the presented SOT/SP scan and lasted another 4–5 days after this scan, until the sunspot finally started to decay (see the animation attached to Fig. B.1). Granular light bridges are therefore likely to be real gaps in the subsurface magnetic environment. According to Rempel (2011), such gaps may be the result of fragmentation events, where field-free plasma intrudes the magnetic root of the sunspot several Mm below the solar surface. In his magneto-hydrodynamic simulations, such intrusions become visible in the

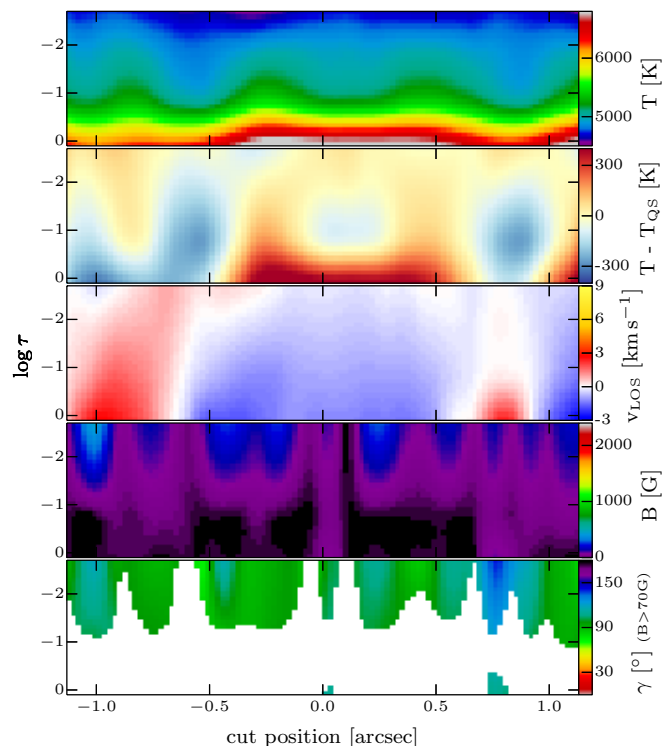


Fig. 7. Same as Fig. 6 for a PLG (see cut (C2) in Fig. 1).

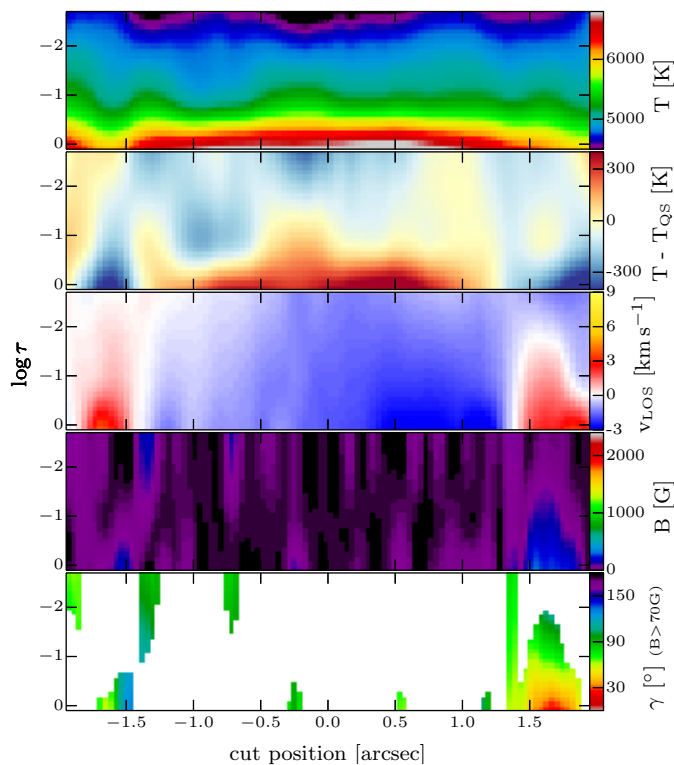


Fig. 8. Same as Fig. 6 for a QSG (see cut (C3) in Fig. 1).

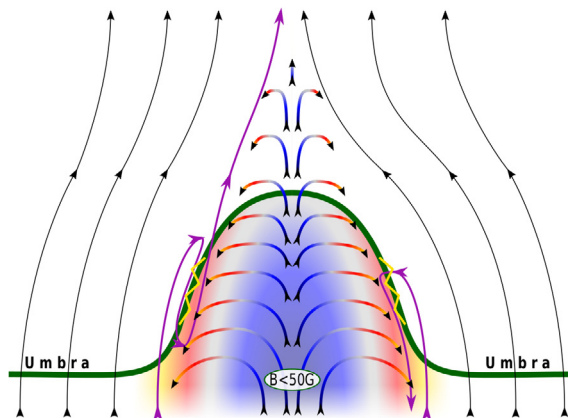
photosphere after timescales of several hours to one day. An alternative possibility is that LBGs are found at the boundary between fragments that emerged individually and then joined to form the sunspot (Garcia de La Rosa 1987).

The differences between LBGs and “normal” granules are clearly dominated by the special location where the upward moving gas reaches the photosphere. The LBGs are exposed to the cold, strongly Wilson-depressed umbral environment, where they stick out like a few-hundred-kilometer-high mountain ridge crossing the umbra (Rüedi et al. 1995a; Lites et al. 2004). The downflow velocities of up to  $10 \text{ km s}^{-1}$  at the boundaries of this ridge can be explained by a combination of gravitational acceleration and the efficient radiative cooling toward the cold umbral environment. This cooling causes the gas to sink faster, in effect making the convection more vigorous. Another reason for the strong observed downflows in LBGs is that we see these downflows at geometrical heights significantly deeper than the downflows in normal intergranular lanes. This is caused by the inclined walls of the umbra as the magnetic field expands with height (and decreasing gas pressure), directly visible in the vertical cut plotted in Fig. 6. Since granular downflows tend to accelerate with depth, at least for the first few 100 km, this view into deeper layers also tends to show stronger downflows. As already stated by Shimizu (2011), a reconnection mechanism, as proposed by Louis et al. (2009), is not required to produce these downflows.

Figure 5 demonstrates that the gas flows in the deepest layer of the edges of LBGs are supersonic. The possible existence of transonic fluid velocities was postulated by Cattaneo et al. (1990) and Malagoli et al. (1990) using numerical simulations of convection. An important ingredient to these flows are non-adiabatic effects caused by the radiative losses in this layer, causing the temperature and subsequently the sound speed to decrease significantly and therefore to accelerate the pressure gradient driven, initially horizontal flow to transonic speeds near the edges of granules. Such horizontal supersonic flows have been detected in observations (Solanki et al. 1996; Rybák et al. 2004; Bellot Rubio 2009), but this is the first time that granulation with supersonic downflows is reported. In the case of the elevated LBG discussed here, the radiative losses do not act on the horizontal flows above the granule interior, but continue to be an efficient, non-adiabatic process lowering the temperature as the gas flows down the slanted walls of the LBG. This process, in combination with the gravitational acceleration, provides a natural explanation for the supersonic flow speeds observed at the edges of LBGs.

The temperature of the downflowing material is determined by multiple effects. On the one hand, it is lowered by radiative cooling, both into space and into the neighboring cold umbra. On the other hand, the deeper layers are hotter due to the general increase of temperature with depth. The balance between these two effects results in temperatures of the visible downflowing gas that are rather similar to the upflowing gas in the lower photosphere (see Fig. 2), in contrast to a PLG or QSG (see Figs. 3 and 4).

The observed downflows occur in a regime where the kinetic energy dominates over the magnetic energy, i.e., where the magnetic field strength is below the equipartition field strength ( $B_{\text{eq}} = v \sqrt{\mu_0 \rho}$ , with  $v$  being the typical velocity of motion and  $\mu_0$  the magnetic permeability). As a consequence, the downflowing material is able to drag the outermost umbral magnetic field lines down and bend them back into the solar interior. This scenario is illustrated in the sketch in Fig. 9. The magnetic field configuration determined from the inversion is compatible with two different scenarios: the tension of the magnetic field is high enough to allow the field line to reverse its direction again (lefthand side of Fig. 9), or the field is dragged down and eventually probably “shredded” in the convective motions in



**Fig. 9.** Sketch of the magnetic and velocity field configuration in a light bridge granule. The solar surface is indicated by the thick green line. The upflowing material in the nearly field-free cell interior is depicted by the blue parts of the curved arrows. The downflowing material (red lines) is able to drag down magnetic field lines (black and purple), creating a region where additional heating might occur (yellow crinkled line). The background colors in the cell interior indicate the LOS velocities (upflows: blue, downflows: red/yellow).

the granule interior (right side of Fig. 9). The opposite polarity field measured at the inner edge of the fast downflows provides evidence for these scenarios. In both cases, the opposite polarity field, confined to a narrow layer, may dissipate a part of its energy, indicated by the yellow zig-zag line in Fig. 9. Magnetic energy can be released by either reconnection processes or by Ohmic dissipation of electric currents flowing in these narrow layers.

The apparent temperature enhancement directly above the fast downflow regions can be attributed to such a magnetically driven heating mechanisms only to a minor extent. As shown in Appendix A one needs to dissipate  $\approx 500 \text{ G}$  in order to raise the temperature by  $\approx 100 \text{ K}$  at  $\tau \approx 1$ . Due to radiative losses, this enhancement is soon removed, so that very significant amounts of magnetic flux would have to be constantly removed to achieve any measurable heating. The often observed enhanced chromospheric activity above light bridges in the form of jets and surges (e.g., Shimizu et al. 2009; Shimizu 2011; Bharti et al. 2007) may, however, be the result of reconnection triggered by the reversal of the field caused by the downflowing material. Since no enhanced chromospheric activity was observed during the time of the SOT/SP scan, there is little evidence for such a magnetically driven heating mechanism.

The transonic speeds of these downflows must unavoidably lead to the formation of shocks, when the flows encounter the high density, deep photospheric layers. The resulting shock waves could, outside the downflow channel, in principle propagate upward into the umbra and subsequently heat the layers above the downflows, explaining the observed apparent temperature enhancement. However, since the measured downflow speeds continue to increase with decreasing optical depth, the shock must be located in deeper layers not accessible by our observations. Therefore the energy deposited by this process is unlikely to reach the heights where we observe the apparent temperature enhancement.

Two other possible origins for this apparent temperature enhancement do not require a specific heating mechanism: firstly, this enhancement could result from the energy radiated horizontally away from the, on a geometrical height scale

elevated, slanted walls of the LBG into the umbra. Due to the decreasing size of the LBG with height the regions heated by this energy appear directly above the strong downflows in the deepest layer, where the granule is broadest. Secondly, the magnetic field in the downflow lanes of the LBG is stronger than in the other two granules studied here and in addition is inclined above the LBG (cusp shape), which decreases the effective gravity and increases the vertical scale height. The density is reduced by the magnetic field, resulting in a depression of the iso- $\tau$  surfaces to deeper, hotter layers. The increased vertical scale height along the field reduces the vertical temperature gradient, producing an apparent temperature enhancement as compared to the surrounding areas with weaker and more vertically oriented magnetic field. Since this effect is mainly produced by the height variation of the iso- $\tau$  surfaces, it may well be absent if geometric height coordinates would be used. However, the lack of knowledge about the true geometric height scale makes it difficult to estimate the significance of the above mentioned processes in producing this apparent temperature enhancement.

At higher layers above the LBGs, the expected cusp-like configuration of the magnetic field becomes clearly visible in the inversion results. The field reaches inclinations with respect to the umbral field of  $70^\circ$ , in good agreement with the value found by Scharmer et al. (2008) on a short, irregular light bridge. A narrow central upflow lane remains visible up to the  $\log \tau = -2.5$ , i.e., the highest level reliably retrieved by inversions of the Fe I 630 nm line pair. Since no continuous net upflow above light bridges is observed at chromospheric heights (Joshi 2014), it is likely that at heights above the formation height of these Fe I lines the upflowing material reverses its direction and contributes to the observed downflows.

The visual impression from the velocity maps in Fig. 2 suggests a significant excess of downflowing material over upflowing material. It is likely that this impression is a consequence of the fact that the up- and downflowing material is measured at different heights, with the downflowing material being sampled at deeper layers, and, because of the inclined iso- $\tau$  surfaces, over a range of heights. The corrugation of the  $\log \tau = 0$  surface makes it virtually impossible to establish an overall mass flux balance. This problem may be solved in the future by stereoscopic measurements, e.g., by combining magnetic field maps obtained with the Solar Orbiter Polarimetric and Helioseismic Imager (Gandorfer et al. 2011) with ground-based or Earth-orbiting spectropolarimetric measurements.

## 6. Summary and conclusion

We presented results from spatially coupled inversions of Stokes profiles in granular light bridges and in plage and quiet-Sun granules. A significant degree of similarity between light bridge granules (LBGs) and granules in plage and quiet-Sun regions (PLGs and QSGs), especially in the deep layers of the cell interior, point to the common driving mechanism of the convective motions. The interiors of all three types of granules are void of measurable magnetic field in their deepest observable layers ( $\tau \approx 1$ ). The field-free regions are dominated by upflowing plasma with velocities of up to  $2 \text{ km s}^{-1}$ . For LBGs, these upflows get squeezed in higher layers into narrow, thin sheets by the expanding magnetic field of the umbra on both sides of the LBGs. The magnetic configuration is consistent with a cusp overlying the upflow. The walls of the LBGs, exposed to the dark umbral environment, harbor downflows with velocities of up to  $10 \text{ km s}^{-1}$ , exceeding the local sound speed in the deepest

observable layers. Hints of field reversal are present in the vicinity of these downflows.

The similarity between LBGs and “normal” granules suggests that granular light bridges are anchored in deep layers. This distinguishes granular light bridges from other convective processes in sunspot umbrae, like umbral dots or faint light bridges, which are, according to MHD simulations, the product of surface magneto-convection within the 1–2 Mm just below the local solar surface.

The exposure of the walls of granular light bridges due to reduced opacity in sunspot umbrae offers an attractive way to probe the deep interior of convective cells using LBGs. A future analysis of LBGs under different viewing geometries, either by studying their center-to-limb variation or by performing stereoscopic measurements might help to uncover further details of magnetoconvection, such as the confirmation of the presence of heating zones, or the study of flow geometry and magnetic field configuration on a geometrical height scale.

*Acknowledgements.* Hinode is a Japanese mission developed and was launched by ISAS/JAXA, collaborating with NAOJ as a domestic partner, NASA and STFC (UK) as international partners. Scientific operation of the Hinode mission is conducted by the Hinode science team organized at ISAS/JAXA. This team mainly consists of scientists from institutes in the partner countries. Support for the post-launch operation is provided by JAXA and NAOJ (Japan), STFC (UK), NASA, ESA, and NSC (Norway). This work was partly supported by the BK 21 plus program through the National Research Foundation (NSF) funded by the Ministry of Education of Korea. The development of the inversion code benefited from two meetings held in February 2010 and December 2012 at the International Space Science Institute (ISSI) in Bern (Switzerland) as part of the International Working Group “Extracting Information from Spectropolarimetric Observations: Comparison of Inversion Codes”.

## Appendix A: Temperature increase due to magnetic field dissipation

As stated in Sect. 5, the enhanced temperature observed directly above the regions of fast downflows at the edges of LBGs can only to a minor extent be attributed to magnetically driven heating mechanisms. To demonstrate this, we compute here the maximum possible temperature increase ( $\Delta T$ ) by completely dissipating a magnetic field ( $B$ ) with a given magnetic energy density ( $\rho_M = B^2/2\mu_0$ ) under typical photospheric conditions:

$$\Delta T = \frac{Q}{c} = \frac{Q}{c_{\text{mol}} n} \quad (\text{A.1})$$

with  $Q$  being the thermal energy,  $c$  the heat capacity,  $n$  the amount of gas in moles, and  $V$  the volume. For simplicity we assume a 1-atomic, ideal gas ( $c_{\text{mol}} = \frac{3}{2}R$ ) to compute  $Q$ :

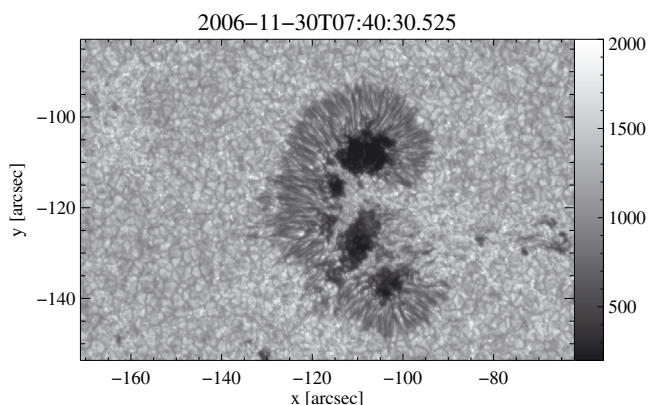
$$Q = V\rho_M = V \frac{B^2}{2\mu_0} = \frac{nRT}{p} \frac{B^2}{2\mu_0} \quad (\text{A.2})$$

(with  $R$  = universal gas constant,  $p$  = gas pressure, and  $T$  = temperature). By inserting this into Eq. A.1 we can compute  $\Delta T$ :

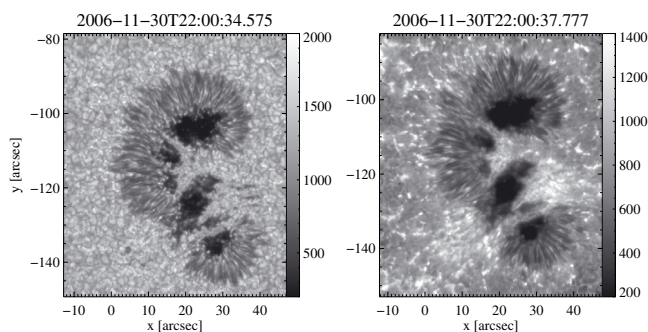
$$\Delta T = \frac{2}{3} \frac{T}{p} \frac{B^2}{2\mu_0} \quad (\text{A.3})$$

Using typical atmospheric conditions in a sunspot from the umbral model of Maltby et al. (1986) at  $\tau = 1$  ( $p = 2 \times 10^5 \text{ dyn/cm}^2$ ,  $T = 3500 \text{ K}$ ) we obtain a temperature increase of  $\Delta T = 18.5 \text{ K}$  for  $B = 200 \text{ G}$ , and  $\Delta T = 116 \text{ K}$  for  $B = 500 \text{ G}$ .

## Appendix B: Animations



**Fig. B.1.** *G*-band images demonstrating the long-term stability of the LBGs under investigation in this paper. The animation, composed from *G*-band images of the Hinode SOT Broad-band Filter Imager (BFI), covers the time period from 2006-Nov.-30, 07:40 UT until 2006-Dec.-03, 23:59 UT. The same granular light bridges are present from the beginning of the observations until the end. ([Online movie](#).)



**Fig. B.2.** BFI images of the *G*-band (*left*) and in the Ca II H line (*right*) around the time of the SOT/SP scan discussed in the paper (Fig. 1). In the animation, the exact time of the SOT/SP scan is indicated by the red text label in the upper lefthand corner. The movie demonstrates the absence of enhanced chromospheric activity above the LBGs during the time of the SOT/SP scan. ([Online movie](#).)

## References

- Bellot Rubio, L. R. 2009, *ApJ*, 700, 284
- Bharti, L., Rimmele, T., Jain, R., Jaaffrey, S. N. A., & Smartt, R. N. 2007, *MNRAS*, 376, 1291
- Bharti, L., Hirzberger, J., & Solanki, S. K. 2013, *A&A*, 552, L1
- Biermann, L. 1941, *Vierteljahresschrift der Astronomischen Gesellschaft*, 76, 194
- Buehler, D., Lagg, A., & Solanki, S. K. 2013, *A&A*, 555, A33
- Cattaneo, F., Hurlburt, N. E., & Toomre, J. 1990, *ApJ*, 349, L63
- Cheung, M. C. M., Schüssler, M., & Moreno-Insertis, F. 2007, *A&A*, 461, 1163
- Frutiger, C. 2000, Ph.D. thesis, ETH Zürich, Switzerland, Diss ETH No. 13896
- Frutiger, C., Solanki, S. K., Fligge, M., & Bruls, J. H. M. J. 2000, *A&A*, 358, 1109
- Gandorfer, A., Solanki, S. K., Woch, J., et al. 2011, *J. Phys. Conf. Ser.*, 271, 012086
- García de La Rosa, J. I. 1987, *Sol. Phys.*, 112, 49
- Giovanelli, R. G. 1980, *Sol. Phys.*, 68, 49
- Giovanelli, R. G., & Jones, H. P. 1982, *Sol. Phys.*, 79, 267
- Gough, D. O., & Tayler, R. J. 1966, *MNRAS*, 133, 85
- Ichimoto, K., Lites, B., Elmore, D., et al. 2008, *Sol. Phys.*, 249, 233
- Joshi, J. 2014, Ph.D. thesis, Technische Universität Carolo-Wilhelmina zu Braunschweig
- Jurčák, J., Martínez Pillet, V., & Sobotka, M. 2006, *A&A*, 453, 1079
- Katsukawa, Y., Yokoyama, T., Berger, T. E., et al. 2007, *PASJ*, 59, 577
- Kosugi, T., Matsuzaki, K., Sakao, T., et al. 2007, *Sol. Phys.*, 243, 3
- Lagg, A., Solanki, S. K., Riethmüller, T. L., et al. 2010, *ApJ*, 723, L164
- Leka, K. D. 1997, *ApJ*, 484, 900
- Lites, B. W., & Ichimoto, K. 2013, *Sol. Phys.*, 283, 601
- Lites, B. W., Bida, T. A., Johannesson, A., & Scharmer, G. B. 1991, *ApJ*, 373, 683
- Lites, B. W., Scharmer, G. B., Berger, T. E., & Title, A. M. 2004, *Sol. Phys.*, 221, 65
- Lites, B. W., Akin, D. L., Card, G., et al. 2013, *Sol. Phys.*, 283, 579
- Loughhead, R. E., & Bray, R. J. 1958, *Austr. J. Phys.*, 11, 177
- Louis, R. E., Bellot Rubio, L. R., Mathew, S. K., & Venkatakrishnan, P. 2009, *ApJ*, 704, L29
- Malagoli, A., Cattaneo, F., & Brummell, N. H. 1990, *ApJ*, 361, L33
- Malthby, P., Avrett, E. H., Carlsson, M., et al. 1986, *ApJ*, 306, 284
- Mathew, S. K., Solanki, S. K., Lagg, A., et al. 2004, *A&A*, 422, 693
- Rempel, M. 2011, *ApJ*, 740, 15
- Rempel, M., Schüssler, M., Cameron, R. H., & Knölker, M. 2009a, *Science*, 325, 171
- Rempel, M., Schüssler, M., & Knölker, M. 2009b, *ApJ*, 691, 640
- Rezaei, R., Bello González, N., & Schlichenmaier, R. 2012, *A&A*, 537, A19
- Riethmüller, T. L., Solanki, S. K., van Noort, M., & Tiwari, S. K. 2013, *A&A*, 554, A53
- Rimmele, T. 2008, *ApJ*, 672, 684
- Roupe van der Voort, L., Bellot Rubio, L. R., & Ortiz, A. 2010, *ApJ*, 718, L78
- Rüedi, I., Solanki, S. K., & Livingston, W. 1995a, *A&A*, 302, 543
- Rüedi, I., Solanki, S. K., & Livingston, W. C. 1995b, *A&A*, 293, 252
- Rybák, J., Wöhl, H., Kučera, A., Hanslmeier, A., & Steiner, O. 2004, *A&A*, 420, 1141
- Scharmer, G. B., Narayan, G., Hillberg, T., et al. 2008, *ApJ*, 689, L69
- Schüssler, M., & Vögler, A. 2006, *ApJ*, 641, L73
- Shimizu, T. 2011, *ApJ*, 738, 83
- Shimizu, T., Lites, B. W., Katsukawa, Y., et al. 2008a, *ApJ*, 680, 1467
- Shimizu, T., Nagata, S., Tsuneta, S., et al. 2008b, *Sol. Phys.*, 249, 221
- Shimizu, T., Katsukawa, Y., Kubo, M., et al. 2009, *ApJ*, 696, L66
- Sobotka, M., & Puschmann, K. G. 2009, *A&A*, 504, 575
- Sobotka, M., Bonet, J. A., & Vazquez, M. 1993, *ApJ*, 415, 832
- Sobotka, M., Bonet, J. A., & Vazquez, M. 1994, *ApJ*, 426, 404
- Sobotka, M., Švanda, M., Jurčák, J., et al. 2013, *A&A*, 560, A84
- Solanki, S. K., Keller, C., & Stenflo, J. O. 1987, *A&A*, 188, 183
- Solanki, S. K., Rüedi, I., & Livingston, W. 1992, *A&A*, 263, 339
- Solanki, S. K., Montavon, C. A. P., & Livingston, W. 1994, *A&A*, 283, 221
- Solanki, S. K., Rüedi, I., Bianda, M., & Steffen, M. 1996, *A&A*, 308, 623
- Solanki, S. K., Finsterle, W., Rüedi, I., & Livingston, W. 1999, *A&A*, 347, L27
- Spruit, H. C., Scharmer, G. B., & Löfdahl, M. G. 2010, *A&A*, 521, A72
- Suematsu, Y., Tsuneta, S., Ichimoto, K., et al. 2008, *Sol. Phys.*, 249, 197
- Tiwari, S. K., van Noort, M., Lagg, A., & Solanki, S. K. 2013, *A&A*, 557, A25
- Tsuneta, S., Ichimoto, K., Katsukawa, Y., et al. 2008, *Sol. Phys.*, 249, 167
- van Noort, M. 2012, *A&A*, 548, A5
- van Noort, M., Lagg, A., Tiwari, S. K., & Solanki, S. K. 2013, *A&A*, 557, A24
- Vazquez, M. 1973, *Sol. Phys.*, 31, 377
- Vögler, A., Shelyag, S., Schüssler, M., et al. 2005, *A&A*, 429, 335